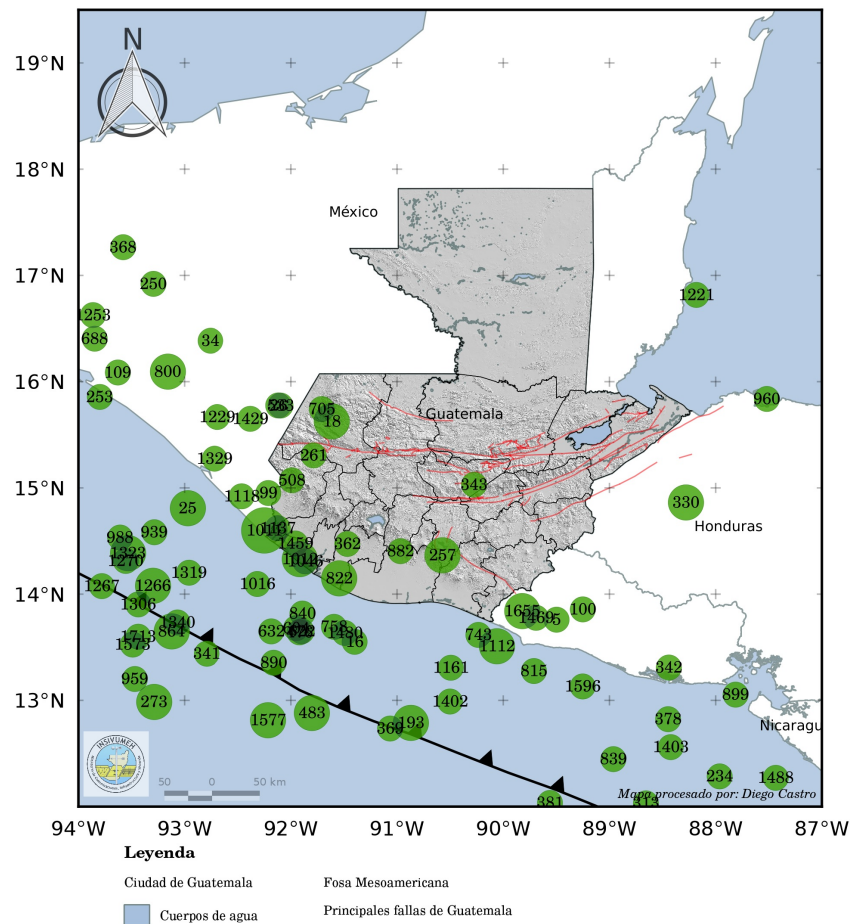


REPORTE ANUAL DE LA ACTIVIDAD SÍSMICA EN GUATEMALA

AÑO 2013



DEPARTAMENTO DE INVESTIGACIÓN Y SERVICIOS GEOFÍSICOS
-INSIVUMEH

SECCIÓN DE SISMOLOGÍA

VIERNES 2023-02-17 16:17

1. Red Sismica Nacional (RSN)

Para el año 2013 la red sismológica nacional (RSN) contó con 8 sensores sismológicos; en la tabla 1 se describe la información de cada estación: la ubicación, periodo de operación. Gracias al apoyo brindado por los proyectos:USAID-VDAP-USGS,LIVERPOOL ha sido posible la instalación de sensores así como poder darle el mantenimiento de nuestra red sismológica nacional.

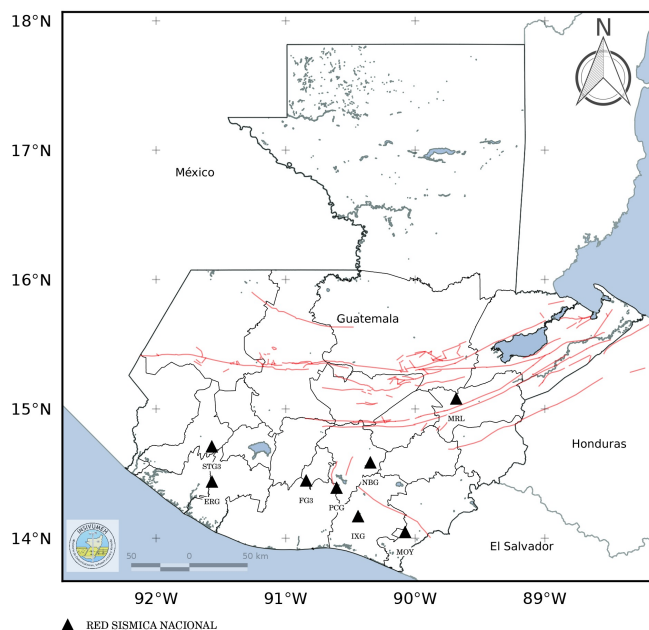


Figura 1: Distribución geográfica de las 8 estaciones que operaron durante el año 2013 .

Cuadro 1: Listado de estaciones sismológicas de la RSN durante el año 2013

CÓDIGO	LOCALIDAD	PERÍODO DE FUNCIONAMIENTO
ERG	Entre Ríos, Suchitepéquez	2013-01-01 - 2013-12-31
MRL	Mármol, Zacapa	2013-01-01 - 2013-12-31
MOY	Moyuta, Jutiapa	2013-01-01 - 2013-12-31
PCG	Volcán de Pacaya	2013-01-01 - 2013-12-31
NBG	Nubes, Guatemala	2013-01-01 - 2013-12-31
STG3	Volcán Santiaguito	2013-01-01 - 2013-12-31
IXG	Ixpaco, Santa Rosa	2013-01-01 - 2013-12-31
FG3	Volcán de Fuego	2013-01-01 - 2013-12-31

(fin del cuadro)

2. Estadística de los sismos registrados durante el año 2013

En el año 2013 se registraron un total de 1716 eventos sísmicos. La magnitud máxima registrada fue de 6.5 y la magnitud mínima de 2.1 .

En la Figura 4 se puede ver la distribución temporal y en la tabla 2 se puede ver el conteo de los sismos por mes.

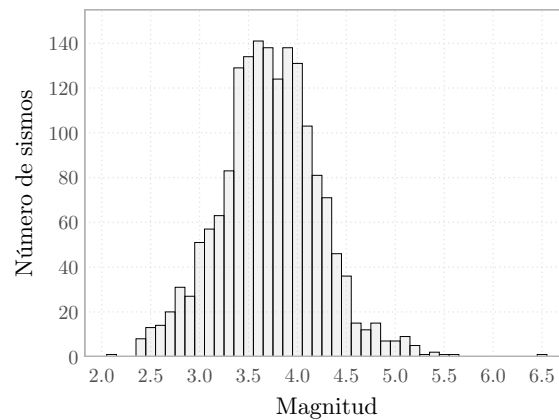


Figura 2: Distribución de las magnitudes de los 1716 eventos sísmicos registrados durante el año 2013 .

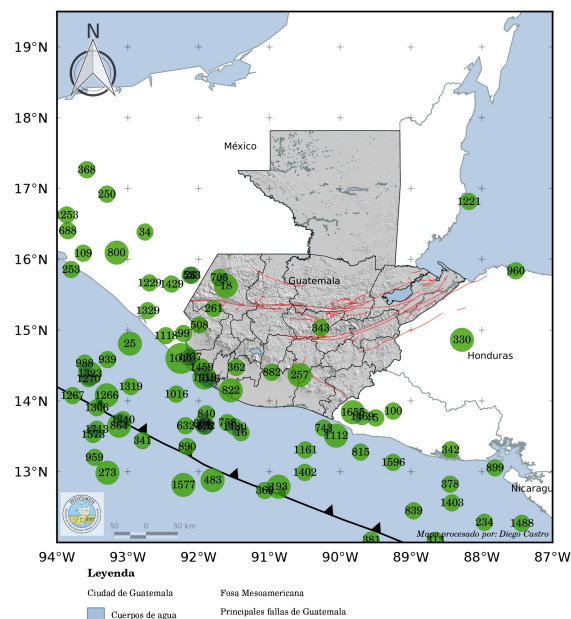
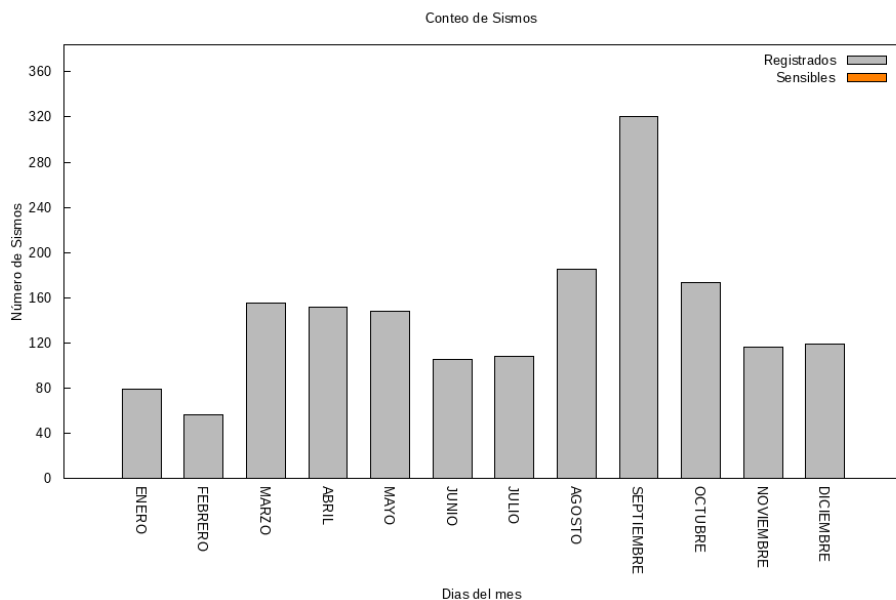


Figura 3: Localización geográfica de los 112 eventos sísmicos registrados durante el año 2013 con magnitud igual o mayor a 4.5.

Figura 4: Distribución temporal de los 1716 eventos sísmicos registrados durante el año 2013 .



Cuadro 2: TABLA RESUMEN DE LOS SISMOS REGISTRADOS POR MES EN EL AÑO 2013

período	sismos registrados*	sismos sensibles
ENERO	79	0
FEBRERO	56	0
MARZO	155	0
ABRIL	152	0
MAYO	148	0
JUNIO	105	0
JULIO	108	0
AGOSTO	185	0
SEPTIEMBRE	320	0
OCTUBRE	173	0
NOVIEMBRE	116	0
DICIEMBRE	119	0
TOTAL	1716	0

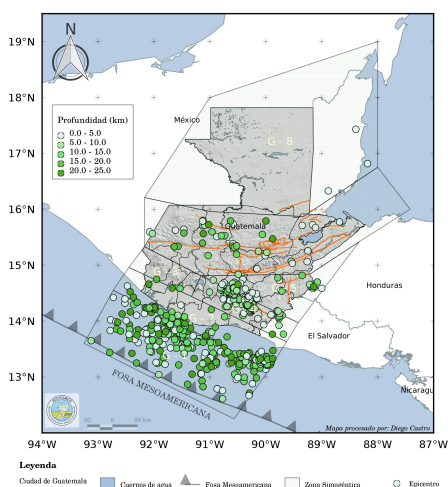
(fin del cuadro)

3. Clasificación de los sismos según su fuente sísmica

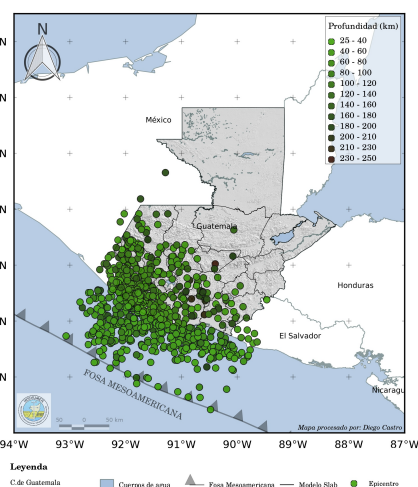
Cuadro 3: sismos localizados

ZONA	sismos registrados
cortical	559
subduccion	858
regional	299
TOTAL	1716

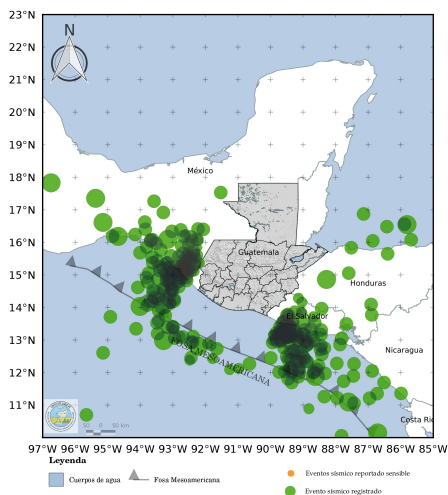
(fin del cuadro)



(a) 559 sismos corticales



(b) 858 sismos de subducción



(c) 299 sismos de regionales y distantes

Figura 5: Mapa donde se muestran agrupados los 1716 eventos sísmicos clasificados según su fuente sísmica registrados para el año 2013

3.1. Zonas sismogénicas

La zonificación utilizada en este boletín está basada en la elaborada por Benito, et al. (2009) para la región del país comprendida en la zona cortical para profundidades menores o iguales a 25 km

3.1.1. Guatemala Pacífico Central (G1)

Comprende la parte superficial de la subducción en el límite Coco-Caribe (CO-CA), entre la Fosa Mesoamericana y la línea de costa. Un evento grande ocurrió en abril de 1902 en el suroccidente de Guatemala con una Ms 7.4 (Pacheco y Sykes, 1992). En esta parte del contacto CO-CA han sido reportados sismos con mecanismos focales de tipo normal y de rumbo (Dean y Drake, 1978). El período medio entre grandes eventos, en la parte superficial e intraplaca de la subducción, ha sido estimado entre 70 y 150 años (White et al., 2004). La zona G1 es una de las zonas de mayor actividad, aunque debe tomarse en cuenta que en esta región, debido a limitaciones geográficas de la Red Sismológica Nacional, las profundidades son difíciles de estimar con precisión, por lo que podrían haber sismos tanto de la placa continental como de la placa oceánica.

Durante el año 2013 se contaron 211 sismos dentro de esta zona. De los cuales cero fueron sensibles.

3.1.2. Guatemala Antearco (G2)

La región G2, comprende sismos corticales con profundidades de hasta 25 km (algunos podrían ser de subducción, como se explicó anteriormente). Esta comprende la franja costera entre la cadena volcánica y la línea de costa. La sismicidad es baja y espacialmente muy dispersa. No habiendo información de eventos grandes o que hayan causado daños importantes con epicentro en esta zona.

Durante el año 2013 se contaron 74 sismos dentro de esta zona. De los cuales cero fueron sensibles.

3.1.3. Guatemala Arco Volcánico Oeste (G3)

Es la franja de aproximadamente 40 km de ancho que incluye el Arco Volcánico, desde la región del Volcán Tacaná, en la frontera con México, hasta el Volcán de Atitlán, más o menos en el Centro del Arco. La sismicidad en esta parte del Arco es menor que en la sección oriental.

Durante el año 2013 se contaron 2 sismos dentro de esta zona. De los cuales cero fueron sensibles.

3.1.4. Guatemala Arco Volcánico Este (G4)

Para las fallas en la franja del Arco Volcánico, White y Harlow (1993) encontraron que el evento de 1930 en el sureste de Guatemala con Mw 6.9 es el mayor asociado a este sistema en toda la región. Asimismo, estos autores indican que la frecuencia de eventos producidos en los sistemas de fallas del Arco Volcánico Centroamericano que han causado daños es de un evento cada 2.5 años durante el siglo XX, a lo largo de toda América Central, desde Guatemala hasta Costa Rica. Esta sección del Arco Volcánico también se caracteriza por la ocurrencia de actividad sísmica tipo enjambre.

Durante el año 2013 se contaron 149 sismos dentro de esta zona. De los cuales cero fueron sensibles.

3.1.5. Guatemala-Depresión de Honduras (G5)

Existe una serie de horst y grabenes orientados aproximadamente de Norte a Sur, desde las montañas mayas de Belice hasta el Golfo de Fonseca, que se conoce como Depresión de Honduras, a pesar de que no existe una continuidad entre ellos. Se trata más bien de una zona de cuencas extensionales bordeadas por fallas normales con rumbo Norte. En el sistema de grabenes, el evento de mayor magnitud que afectó a Guatemala fue el de 1934 con Mw 6.2. En el presente reporte, G5 se tomó de la zona más general G5-S5-H1 propuesta por los autores.

Durante el año 2013 se contaron 49 sismos dentro de esta zona. De los cuales cero fueron sensibles.

3.1.6. Guatemala Polochic Motagua Oeste (G6)

Esta es una zona de fallas paralelas de rumbo E-W y corrimiento lateral izquierdo: Chixoy-Polochic, Motagua y Jocotán-Chamelecón (Plafker, 1976; Mann et. al., 1990). White (1991) estima un período de recurrencia de grandes eventos de 225 ± 50 años. White y Harlow (1993) incluyen, entre los eventos destructivos ocurridos durante el siglo XX y asociados a este límite, dos eventos localizados a, aproximadamente, 50 km al norte de la traza de la Falla Polochic. Si bien estos dos eventos son producto de las deformaciones en el límite Norte América-Caribe, claramente ocurren en fallas secundarias que no necesariamente siguen el rumbo o tipo de mecanismo del sistema Polochic-Motagua. Algunos autores consideran que este sistema de fallas termina en el occidente de Guatemala y SE de México (Ellis, et al, 2019; Guzman-Speziale y Meneses-Rocha, 2000; Guzman-Speziale et al., 1989). Medidas con GPS indican que el desplazamiento relativo es de entre 3.2 y 3.3 mm/año en la falla de Polochic, mientras que en la Falla del Motagua (la que absorbe la mayor parte de la deformación) va de 17.6 mm/año en el extremo oriental a 9.6 mm/año en el extremo occidental (Ellis, et al., 2019; Lyon-Caen et al., 2006).

Durante el año 2013 se contaron 64 sismos dentro de esta zona. De los cuales cero fueron sensibles.

3.1.7. Guatemala Norte (Petén-Belice y parte del territorio mexicano) (G8)

Esta es una zona de baja sismicidad y especialmente muy dispersa, que comprende el norte de Guatemala, Belice y algunas regiones cercanas del territorio mexicano.

Durante el año 2013 se contaron 10 sismos dentro de esta zona. De los cuales cero fueron sensibles.

4. Catálogo de eventos sísmicos registrados durante el año 2013

Cuadro 4: Información de los eventos sísmicos registrados

No.	Tiempo de origen	Lat	Lon	Prof	M	NST	NF	ZS
1	2013-01-01 01:56	14.380	-90.447	5.5	2.9	4	5	G4
2	2013-01-01 02:49	14.439	-90.392	9.5	2.6	4	6	G4
3	2013-01-01 19:18	13.923	-91.726	11.1	4.2	5	7	G1
4	2013-01-01 21:12	13.758	-90.993	4.6	3.6	5	5	G2

Continúa en la siguiente página...

Cuadro 4: ...continuación

No.	Tiempo de origen	Lat	Lon	Prof	M	NST	NF	ZS
5*	2013-01-02 01:45	13.759	-89.498	33.1	4.6	5	5	REGIONAL
6	2013-01-02 18:38	14.743	-90.410	3.1	3.7	4	4	G5
7*	2013-01-02 18:40	14.675	-90.453	0.0	3.3	3	5	G5
8	2013-01-03 00:30	14.164	-91.880	13.9	3.9	5	9	G2
9*	2013-01-03 05:20	12.334	-88.868	0.0	4.3	3	5	REGIONAL
10	2013-01-03 06:50	12.924	-89.934	4.9	4.3	6	7	REGIONAL
11*	2013-01-03 12:13	15.330	-91.879	38.8	3.9	3	5	SUBDUCCION
12*	2013-01-03 23:11	14.305	-90.382	38.9	3.4	5	5	SUBDUCCION
13*	2013-01-04 07:57	13.735	-92.095	23.4	3.9	4	5	G1
14	2013-01-04 10:18	14.371	-90.469	9.4	3.1	4	6	G4
15*	2013-01-04 18:11	13.774	-92.252	34.1	4.0	4	6	SUBDUCCION
16*	2013-01-05 13:50	13.551	-91.399	13.2	4.5	5	6	G1
17	2013-01-06 01:33	13.917	-90.617	71.1	3.4	4	5	SUBDUCCION
18*	2013-01-06 12:25	15.625	-91.614	0.0	5.1	5	6	G6
19*	2013-01-06 17:24	13.579	-91.438	2.2	4.1	5	8	G1
20	2013-01-08 09:42	14.019	-91.941	4.4	3.9	5	9	G1
21*	2013-01-08 14:42	11.875	-89.139	33.2	4.2	3	4	DISTANTE
22*	2013-01-09 03:33	11.695	-89.349	34.9	4.1	3	5	DISTANTE
23*	2013-01-10 11:06	13.216	-90.992	19.2	3.4	4	4	G1
24	2013-01-10 15:01	13.890	-91.019	68.9	4.0	6	7	SUBDUCCION
25*	2013-01-11 10:30	14.808	-92.972	31.2	5.1	6	6	REGIONAL
26	2013-01-11 14:32	15.775	-92.118	302.2	4.6	6	8	SUBDUCCION
27	2013-01-11 16:10	13.166	-89.820	18.7	3.7	3	6	REGIONAL
28	2013-01-11 22:07	13.817	-92.112	0.0	4.0	5	8	G1
29*	2013-01-13 08:35	14.021	-92.778	3.0	4.3	4	4	G1
30*	2013-01-13 21:06	13.234	-90.099	0.1	3.9	4	5	G2
31	2013-01-14 07:16	13.654	-90.657	33.8	3.8	5	6	SUBDUCCION
32	2013-01-15 02:11	13.704	-90.681	50.0	3.0	4	8	SUBDUCCION
33	2013-01-15 02:34	12.879	-90.239	0.1	3.8	4	6	G1
34*	2013-01-15 07:42	16.384	-92.758	230.0	4.5	4	5	REGIONAL
35	2013-01-15 09:16	13.623	-90.864	45.5	3.2	5	8	SUBDUCCION
36	2013-01-15 11:59	13.651	-90.591	50.0	3.8	6	7	SUBDUCCION
37	2013-01-16 14:33	14.601	-90.759	2.7	3.2	5	5	G4
38*	2013-01-16 16:14	15.836	-92.197	44.7	2.9	4	4	REGIONAL
39*	2013-01-16 16:18	14.541	-90.775	8.2	2.9	3	5	G4
40*	2013-01-17 00:38	13.218	-89.144	26.2	3.9	4	5	REGIONAL
41*	2013-01-17 01:24	13.392	-89.972	35.1	4.3	6	7	SUBDUCCION
42*	2013-01-17 03:11	13.858	-92.124	0.0	4.0	5	8	G1
43*	2013-01-18 16:40	13.546	-90.534	35.8	3.7	5	7	SUBDUCCION
44	2013-01-19 00:20	14.096	-91.451	31.9	3.9	5	6	SUBDUCCION
45	2013-01-19 03:28	13.858	-91.462	20.8	3.5	5	9	G1
46*	2013-01-19 09:10	13.499	-92.394	34.9	4.1	4	5	SUBDUCCION
47*	2013-01-19 11:57	13.581	-91.839	0.0	3.9	4	5	G1
48	2013-01-19 12:32	14.081	-90.016	34.3	3.9	4	4	SUBDUCCION
49	2013-01-19 18:19	13.941	-91.450	23.3	3.6	5	8	G2
50*	2013-01-20 18:32	13.780	-92.399	6.0	4.3	5	5	G1

Continua en la siguiente página...

Cuadro 4: ...continuación

No.	Tiempo de origen	Lat	Lon	Prof	M	NST	NF	ZS
51*	2013-01-21 11:41	13.649	-90.894	31.5	3.1	4	4	SUBDUCCION
52	2013-01-22 00:24	13.605	-89.715	28.8	3.4	3	4	SUBDUCCION
53	2013-01-22 14:17	13.582	-90.132	46.4	3.2	4	5	SUBDUCCION
54	2013-01-22 15:19	14.311	-90.228	7.4	2.9	3	6	G4
55*	2013-01-22 16:15	14.300	-90.237	8.3	2.6	3	6	G4
56	2013-01-22 22:44	14.240	-90.338	38.2	3.4	4	5	SUBDUCCION
57	2013-01-23 03:10	14.008	-91.669	25.4	3.6	3	6	SUBDUCCION
58*	2013-01-23 05:26	13.893	-91.474	13.1	3.5	3	6	G1
59*	2013-01-23 06:36	13.405	-92.993	35.1	4.4	4	5	REGIONAL
60*	2013-01-25 08:47	13.964	-91.386	0.0	3.5	4	7	G2
61*	2013-01-25 10:34	13.827	-92.310	2.5	4.0	4	7	G1
62	2013-01-25 12:20	13.551	-90.398	30.6	3.8	5	10	SUBDUCCION
63	2013-01-25 23:17	13.366	-89.412	7.4	4.0	3	5	REGIONAL
64	2013-01-26 02:16	13.423	-89.751	17.9	3.8	4	7	REGIONAL
65	2013-01-26 02:44	13.718	-90.692	19.5	3.5	4	7	G2
66	2013-01-26 03:36	13.580	-89.543	20.6	4.3	5	7	REGIONAL
67	2013-01-26 08:25	13.938	-91.568	20.2	3.9	4	8	G1
68	2013-01-26 13:17	13.948	-91.484	20.9	3.6	5	9	G2
69	2013-01-26 14:20	13.679	-90.860	28.1	3.6	5	9	SUBDUCCION
70	2013-01-27 04:46	14.285	-90.336	8.7	3.0	4	6	G4
71*	2013-01-27 06:08	12.608	-95.146	10.9	4.0	4	4	DISTANTE
72	2013-01-28 15:02	13.922	-91.522	19.8	3.5	4	8	G1
73	2013-01-28 17:04	14.423	-90.368	3.0	3.1	4	4	G4
74*	2013-01-28 17:56	13.949	-91.686	9.0	4.0	4	5	G1
75	2013-01-28 19:49	14.038	-91.927	13.1	3.8	4	7	G1
76	2013-01-29 04:45	14.008	-91.584	23.3	3.3	3	4	G2
77*	2013-01-29 09:09	13.079	-89.074	34.6	4.0	4	4	REGIONAL
78*	2013-01-29 17:59	14.013	-91.461	35.3	3.4	4	7	SUBDUCCION
79*	2013-01-31 07:27	13.696	-91.498	7.5	3.6	3	5	G1
80	2013-02-01 10:01	13.202	-90.098	19.2	3.9	3	5	G1
81*	2013-02-01 11:03	13.004	-89.173	29.0	4.2	4	4	REGIONAL
82	2013-02-01 19:22	13.964	-91.509	24.9	3.6	4	6	G2
83	2013-02-01 23:20	13.439	-89.349	14.2	3.9	3	4	REGIONAL
84*	2013-02-02 02:40	14.592	-91.980	68.4	3.7	4	5	SUBDUCCION
85*	2013-02-02 13:10	13.943	-91.365	5.5	3.9	4	4	G2
86	2013-02-02 18:28	14.582	-90.789	4.9	2.9	3	5	G4
87*	2013-02-03 03:16	14.919	-92.587	96.1	4.3	4	6	REGIONAL
88	2013-02-04 02:48	13.330	-91.280	21.5	3.9	4	6	G1
89*	2013-02-04 15:07	13.698	-91.134	4.0	3.7	4	4	G1
90	2013-02-04 15:11	13.517	-91.312	18.1	3.8	5	6	G1
91	2013-02-05 02:33	13.395	-90.916	21.6	4.1	4	5	G1
92*	2013-02-05 03:11	13.698	-92.468	33.2	3.9	4	5	SUBDUCCION
93	2013-02-06 09:29	13.872	-91.435	26.1	3.7	4	6	SUBDUCCION
94	2013-02-07 08:17	13.898	-91.510	19.8	3.8	4	8	G1
95	2013-02-07 20:10	13.554	-90.779	31.1	3.2	3	5	SUBDUCCION
96*	2013-02-08 00:11	14.191	-92.431	34.4	4.1	3	5	SUBDUCCION

Continua en la siguiente página...

Cuadro 4: ...continuación

No.	Tiempo de origen	Lat	Lon	Prof	M	NST	NF	ZS
97	2013-02-08 00:41	13.472	-89.872	23.9	4.0	4	6	G2
98*	2013-02-08 03:58	14.260	-92.961	50.0	4.1	3	5	REGIONAL
99*	2013-02-08 15:06	14.951	-92.211	55.9	4.8	6	6	SUBDUCCION
100*	2013-02-09 08:19	13.856	-89.251	99.5	4.5	4	0	REGIONAL
101	2013-02-09 10:07	13.872	-91.345	23.7	3.1	3	5	G2
102*	2013-02-09 12:56	12.754	-88.343	97.4	4.3	5	6	REGIONAL
103*	2013-02-09 23:52	13.618	-90.823	27.6	4.1	5	5	SUBDUCCION
104*	2013-02-10 00:22	13.917	-91.737	13.2	3.5	4	7	G1
105*	2013-02-11 04:27	13.924	-92.198	88.2	3.8	3	5	SUBDUCCION
106*	2013-02-11 04:27	13.741	-91.569	16.0	4.0	3	4	G1
107*	2013-02-11 16:26	14.371	-90.457	1.4	2.8	3	6	G4
108	2013-02-11 23:05	14.840	-91.386	194.5	3.6	3	5	SUBDUCCION
109*	2013-02-13 22:00	16.085	-93.631	160.7	4.7	5	8	REGIONAL
110	2013-02-14 23:23	14.315	-90.346	8.5	3.0	4	6	G4
111*	2013-02-16 07:17	13.989	-92.685	0.3	4.2	4	7	G1
112*	2013-02-18 07:49	13.493	-92.036	34.9	4.0	3	6	SUBDUCCION
113	2013-02-19 00:54	13.690	-90.974	26.2	3.3	4	5	SUBDUCCION
114*	2013-02-19 09:25	13.902	-92.284	34.8	3.9	3	5	SUBDUCCION
115*	2013-02-19 11:50	14.294	-92.363	12.5	3.8	4	5	G1
116*	2013-02-19 15:17	14.759	-92.048	178.8	4.1	3	6	SUBDUCCION
117	2013-02-21 03:49	14.048	-91.667	18.4	4.2	4	5	G2
118*	2013-02-21 11:27	14.207	-90.973	17.7	4.3	5	5	G2
119*	2013-02-21 15:40	13.894	-91.210	48.9	3.4	5	7	SUBDUCCION
120	2013-02-21 18:52	13.699	-90.769	44.8	3.6	4	6	SUBDUCCION
121*	2013-02-22 19:29	13.972	-91.809	12.4	3.6	3	3	G1
122*	2013-02-23 01:05	13.634	-92.217	35.1	4.0	3	6	SUBDUCCION
123	2013-02-23 05:03	13.897	-91.145	31.7	3.2	4	8	SUBDUCCION
124	2013-02-23 13:00	13.782	-91.679	14.2	3.4	4	5	G1
125	2013-02-24 00:25	13.586	-90.212	59.6	3.4	3	6	SUBDUCCION
126	2013-02-24 14:42	14.053	-91.083	85.4	3.2	5	7	SUBDUCCION
127*	2013-02-25 01:08	14.109	-91.414	45.8	4.3	5	6	SUBDUCCION
128	2013-02-25 04:37	13.847	-91.168	30.3	3.1	3	5	SUBDUCCION
129	2013-02-25 07:05	13.777	-91.123	27.1	3.5	4	5	SUBDUCCION
130*	2013-02-25 16:52	13.814	-91.017	12.7	2.9	5	8	G2
131*	2013-02-26 02:45	14.190	-91.577	56.0	3.3	3	6	SUBDUCCION
132*	2013-02-26 10:27	16.184	-91.732	161.1	4.1	3	5	SUBDUCCION
133*	2013-02-26 11:15	15.918	-91.243	147.9	4.1	3	5	SUBDUCCION
134*	2013-02-26 22:36	13.705	-91.513	13.2	3.3	3	6	G1
135	2013-02-28 15:27	13.281	-90.108	21.9	3.5	4	7	G2
136*	2013-03-01 06:29	13.223	-90.143	21.4	3.5	3	6	G1
137	2013-03-04 07:50	14.230	-90.271	3.2	4.0	5	5	G4
138	2013-03-04 08:25	13.810	-90.624	31.5	3.3	3	6	SUBDUCCION
139*	2013-03-04 10:01	14.202	-90.247	13.6	3.3	5	6	G4
140	2013-03-04 10:10	14.205	-90.236	6.1	2.7	3	4	G4
141	2013-03-04 12:23	14.203	-90.256	7.7	3.3	6	9	G4
142*	2013-03-04 16:26	14.218	-90.241	0.1	2.8	4	4	G4

Continua en la siguiente página...

Cuadro 4: ...continuación

No.	Tiempo de origen	Lat	Lon	Prof	M	NST	NF	ZS
143	2013-03-04 22:05	14.192	-90.253	9.8	3.3	5	7	G4
144	2013-03-05 00:21	14.232	-90.311	6.9	3.6	5	6	G4
145	2013-03-05 01:07	14.216	-90.288	9.2	3.4	4	5	G4
146	2013-03-05 02:52	14.217	-90.289	7.8	3.5	5	6	G4
147	2013-03-05 02:53	14.214	-90.293	8.1	2.6	4	4	G4
148	2013-03-05 02:55	14.231	-90.289	6.3	2.8	4	6	G4
149*	2013-03-05 02:58	14.273	-90.334	1.2	2.5	3	4	G4
150	2013-03-05 03:03	14.224	-90.297	9.4	2.8	4	6	G4
151	2013-03-05 03:32	14.212	-90.277	8.1	2.8	4	6	G4
152	2013-03-05 03:43	14.234	-90.282	7.2	2.6	4	5	G4
153	2013-03-05 05:02	14.189	-90.258	12.3	2.8	4	4	G4
154	2013-03-05 05:34	14.224	-90.281	6.7	3.0	4	7	G4
155	2013-03-05 07:27	14.233	-90.255	8.3	2.7	3	4	G4
156	2013-03-05 09:35	14.220	-90.244	6.4	3.1	3	5	G4
157*	2013-03-05 10:43	14.221	-90.234	1.0	2.8	4	4	G4
158*	2013-03-05 11:22	14.226	-90.240	0.0	3.1	4	4	G4
159	2013-03-05 11:39	14.098	-90.409	14.1	2.8	3	4	G4
160	2013-03-05 11:50	14.186	-90.254	8.0	3.4	4	4	G4
161	2013-03-05 14:25	14.228	-90.238	1.6	2.7	4	4	G4
162	2013-03-05 15:01	14.195	-90.255	6.8	3.9	6	7	G4
163	2013-03-05 15:05	14.194	-90.256	7.4	3.0	6	9	G4
164	2013-03-05 15:14	14.188	-90.263	5.0	3.6	6	6	G4
165	2013-03-05 15:19	14.221	-90.248	10.3	2.6	5	7	G4
166	2013-03-05 15:20	14.193	-90.255	6.3	3.8	6	7	G4
167	2013-03-05 15:39	14.184	-90.265	4.9	4.1	6	6	G4
168	2013-03-05 17:23	14.289	-90.336	1.1	2.6	4	6	G4
169	2013-03-05 17:26	14.187	-90.269	8.6	2.7	5	7	G4
170	2013-03-05 17:26	14.181	-90.260	9.6	2.8	5	7	G4
171	2013-03-05 22:05	14.228	-90.215	6.5	2.5	4	5	G4
172	2013-03-05 22:06	14.152	-90.275	12.1	2.4	3	5	G4
173*	2013-03-05 22:07	14.182	-90.246	11.5	2.1	3	5	G4
174	2013-03-06 01:17	14.215	-90.256	6.4	3.9	5	9	G4
175*	2013-03-06 12:14	13.960	-91.399	35.4	2.8	4	4	SUBDUCCION
176	2013-03-06 17:45	14.187	-90.255	13.0	3.0	4	5	G4
177	2013-03-06 17:47	14.213	-90.241	6.1	3.1	4	7	G4
178	2013-03-07 01:39	13.219	-89.919	23.7	3.6	4	7	G2
179*	2013-03-07 06:30	13.920	-91.613	13.1	3.6	4	7	G1
180	2013-03-07 10:52	13.851	-89.994	50.0	2.7	3	3	SUBDUCCION
181*	2013-03-07 11:30	14.256	-90.284	1.7	3.2	4	6	G4
182	2013-03-07 14:37	13.917	-91.293	50.0	4.2	6	8	SUBDUCCION
183*	2013-03-07 17:24	13.356	-90.137	27.1	4.2	5	5	SUBDUCCION
184	2013-03-07 17:43	14.207	-90.238	6.0	2.9	4	6	G4
185	2013-03-07 20:12	13.444	-90.184	28.1	3.5	4	7	SUBDUCCION
186	2013-03-07 21:58	14.128	-89.815	1.1	3.1	5	6	G4
187	2013-03-08 12:35	13.412	-90.951	17.8	4.2	6	7	G1
188*	2013-03-08 19:35	13.721	-91.059	21.7	3.7	4	4	G2

Continua en la siguiente página...

Cuadro 4: ...continuación

No.	Tiempo de origen	Lat	Lon	Prof	M	NST	NF	ZS
189*	2013-03-08 21:28	13.118	-90.071	41.2	3.7	3	6	SUBDUCCION
190*	2013-03-08 21:43	13.733	-91.758	1.4	4.0	5	6	G1
191	2013-03-09 04:05	14.048	-90.346	50.0	2.6	3	3	SUBDUCCION
192*	2013-03-09 04:05	14.232	-90.225	6.3	2.4	3	5	G4
193*	2013-03-10 04:18	12.788	-90.869	21.0	5.0	4	4	G1
194	2013-03-10 07:15	13.523	-90.147	34.2	3.3	3	6	SUBDUCCION
195*	2013-03-10 16:44	14.561	-91.659	70.4	3.6	3	6	SUBDUCCION
196*	2013-03-10 19:09	13.256	-90.756	31.8	3.7	4	4	SUBDUCCION
197	2013-03-10 22:55	14.276	-90.293	1.1	2.4	4	5	G4
198	2013-03-11 02:04	13.654	-90.881	31.7	3.2	5	6	SUBDUCCION
199*	2013-03-11 08:23	14.051	-91.853	35.1	3.7	4	6	SUBDUCCION
200*	2013-03-11 15:25	13.168	-88.447	195.8	4.0	5	6	REGIONAL
201*	2013-03-11 16:51	13.562	-90.839	32.3	4.2	4	4	SUBDUCCION
202	2013-03-11 21:03	13.677	-91.058	27.2	3.0	5	9	SUBDUCCION
203*	2013-03-11 21:45	17.829	-96.742	50.0	5.2	6	6	DISTANTE
204*	2013-03-12 00:18	13.609	-90.878	2.4	3.4	5	6	G2
205*	2013-03-12 13:22	12.072	-89.464	0.0	3.9	4	5	REGIONAL
206*	2013-03-12 17:08	13.800	-90.475	47.9	3.8	4	4	SUBDUCCION
207*	2013-03-13 11:32	13.594	-90.581	27.3	3.5	5	7	SUBDUCCION
208*	2013-03-13 13:34	13.242	-91.936	13.4	4.3	5	5	G1
209*	2013-03-13 15:24	13.722	-90.710	62.6	3.1	5	7	SUBDUCCION
210	2013-03-15 03:15	14.236	-90.320	16.8	2.7	4	5	G4
211	2013-03-15 07:43	13.775	-91.025	9.6	3.7	5	5	G2
212*	2013-03-16 05:51	12.129	-90.974	32.8	3.5	4	4	REGIONAL
213*	2013-03-16 06:57	13.813	-91.730	29.7	3.3	5	5	SUBDUCCION
214	2013-03-16 09:54	14.044	-89.764	10.5	3.1	4	5	G4
215*	2013-03-16 14:07	14.507	-91.420	62.0	3.5	6	7	SUBDUCCION
216*	2013-03-16 22:40	13.843	-92.508	35.4	3.8	6	7	SUBDUCCION
217	2013-03-17 04:15	14.069	-89.777	9.5	3.3	4	6	G4
218	2013-03-17 06:55	14.287	-91.059	32.8	2.8	5	7	SUBDUCCION
219*	2013-03-17 08:12	14.707	-91.820	95.4	3.4	5	5	SUBDUCCION
220*	2013-03-17 15:14	13.764	-91.976	0.0	3.9	6	8	G1
221	2013-03-18 00:27	14.236	-90.236	7.1	3.0	5	7	G4
222	2013-03-18 00:38	14.196	-90.259	6.2	2.7	5	8	G4
223	2013-03-18 03:07	13.877	-91.394	33.6	3.4	6	6	SUBDUCCION
224*	2013-03-18 07:56	15.056	-87.598	152.0	4.1	4	6	REGIONAL
225*	2013-03-18 08:56	15.888	-92.730	32.5	4.0	3	5	REGIONAL
226*	2013-03-18 11:39	15.394	-91.130	15.2	3.7	6	7	G6
227	2013-03-18 14:45	13.686	-91.195	28.0	3.7	6	9	SUBDUCCION
228*	2013-03-18 16:59	14.164	-92.421	23.6	4.1	6	8	G1
229*	2013-03-18 19:37	13.562	-91.460	14.2	4.1	6	8	G1
230*	2013-03-19 05:31	15.055	-93.751	35.0	4.3	5	8	REGIONAL
231	2013-03-19 16:17	14.515	-91.684	90.2	4.0	7	9	SUBDUCCION
232*	2013-03-20 13:19	15.109	-91.036	52.7	3.0	3	6	SUBDUCCION
233*	2013-03-20 13:28	13.538	-90.643	49.0	3.2	5	10	SUBDUCCION
234*	2013-03-20 21:54	12.285	-87.963	33.5	4.6	6	10	REGIONAL

Continua en la siguiente página...

Cuadro 4: ...continuación

No.	Tiempo de origen	Lat	Lon	Prof	M	NST	NF	ZS
235	2013-03-21 01:12	14.312	-90.304	9.2	2.5	4	7	G4
236*	2013-03-21 05:08	13.799	-90.967	5.1	3.3	5	9	G2
237*	2013-03-21 10:04	14.501	-91.666	73.1	3.4	4	7	SUBDUCCION
238	2013-03-21 11:45	13.289	-90.534	22.8	3.4	5	7	G1
239*	2013-03-21 18:58	15.312	-92.301	44.7	3.8	4	5	REGIONAL
240*	2013-03-21 19:03	14.227	-91.918	50.0	3.6	4	6	SUBDUCCION
241*	2013-03-21 22:35	13.942	-91.669	28.8	3.0	3	5	SUBDUCCION
242*	2013-03-21 23:08	14.915	-92.730	107.0	4.0	6	10	REGIONAL
243*	2013-03-22 19:06	15.157	-91.606	50.0	3.4	4	7	SUBDUCCION
244*	2013-03-22 22:41	14.501	-90.293	5.7	3.1	3	6	G5
245	2013-03-22 22:43	13.719	-91.017	27.8	3.4	5	9	SUBDUCCION
246*	2013-03-22 23:00	14.374	-90.623	1.0	2.9	3	4	G4
247	2013-03-23 01:16	14.396	-90.601	3.5	2.7	4	6	G4
248	2013-03-23 17:54	13.486	-90.877	31.5	3.5	6	8	SUBDUCCION
249	2013-03-23 23:01	13.486	-90.299	26.7	3.4	6	10	SUBDUCCION
250*	2013-03-24 04:29	16.919	-93.296	180.0	4.5	7	7	REGIONAL
251*	2013-03-24 14:16	13.879	-90.945	72.5	3.0	4	8	SUBDUCCION
252	2013-03-24 19:09	13.664	-90.217	63.2	3.7	6	8	SUBDUCCION
253*	2013-03-25 00:27	15.855	-93.801	13.3	4.5	5	7	REGIONAL
254*	2013-03-25 01:01	14.549	-89.731	13.3	3.1	6	10	G5
255*	2013-03-25 04:45	14.486	-90.308	1.8	2.8	3	4	G5
256*	2013-03-25 10:35	14.535	-89.710	13.1	3.2	6	8	G5
257*	2013-03-25 17:02	14.365	-90.572	201.6	5.6	8	9	SUBDUCCION
258*	2013-03-25 17:42	13.414	-90.258	30.8	4.4	8	8	SUBDUCCION
259*	2013-03-25 17:45	14.439	-90.628	198.6	3.9	6	6	SUBDUCCION
260	2013-03-26 03:01	15.382	-90.588	3.2	4.0	7	7	G6
261*	2013-03-26 06:54	15.305	-91.785	28.1	4.6	6	6	SUBDUCCION
262*	2013-03-26 09:21	13.687	-92.255	35.0	3.9	4	4	SUBDUCCION
263*	2013-03-26 10:03	15.595	-92.076	3.5	4.0	5	9	G6
264	2013-03-26 15:58	14.225	-90.262	8.1	2.8	5	7	G4
265	2013-03-26 16:21	13.348	-90.208	22.9	3.7	5	10	G2
266*	2013-03-26 16:46	13.379	-92.407	25.5	4.2	5	5	SUBDUCCION
267	2013-03-26 20:15	14.137	-89.752	8.7	3.3	5	8	G5
268	2013-03-27 11:26	14.184	-89.797	6.0	3.1	5	9	G5
269*	2013-03-27 13:53	13.873	-90.674	43.9	3.7	4	6	SUBDUCCION
270*	2013-03-27 15:01	13.732	-90.946	38.8	3.3	5	8	SUBDUCCION
271*	2013-03-27 15:54	12.417	-90.478	35.2	3.9	5	8	SUBDUCCION
272*	2013-03-27 18:42	13.949	-91.282	42.0	3.4	6	12	SUBDUCCION
273*	2013-03-27 20:52	12.985	-93.289	50.0	5.0	8	8	REGIONAL
274	2013-03-27 23:45	13.342	-90.971	9.6	3.9	6	6	G1
275*	2013-03-28 01:37	14.884	-91.639	32.5	4.2	8	8	SUBDUCCION
276	2013-03-28 07:01	14.206	-90.247	12.1	2.5	4	6	G4
277*	2013-03-28 07:08	15.169	-90.009	4.7	3.2	4	7	G6
278*	2013-03-28 12:14	13.842	-92.145	0.0	4.0	5	8	G1
279*	2013-03-28 17:40	13.749	-92.671	50.0	4.2	5	7	SUBDUCCION
280	2013-03-28 20:20	13.745	-91.807	3.8	3.9	4	5	G1

Continua en la siguiente página...

Cuadro 4: ...continuación

No.	Tiempo de origen	Lat	Lon	Prof	M	NST	NF	ZS
281*	2013-03-28 23:00	15.705	-91.128	7.3	4.0	6	8	G6
282	2013-03-29 03:33	14.195	-90.252	7.7	2.9	4	4	G4
283*	2013-03-29 07:19	14.000	-91.780	0.1	3.7	4	4	G1
284*	2013-03-29 18:39	15.249	-90.131	8.8	3.0	4	7	G6
285*	2013-03-30 03:31	12.787	-90.869	0.0	3.8	5	5	G1
286*	2013-03-31 07:31	10.893	-88.821	0.3	3.4	6	6	DISTANTE
287*	2013-03-31 10:46	14.333	-92.300	16.5	3.9	6	8	G2
288*	2013-03-31 14:33	11.736	-87.753	32.6	4.8	6	6	DISTANTE
289*	2013-03-31 16:28	15.172	-92.656	39.4	4.0	6	9	REGIONAL
290*	2013-03-31 23:57	13.948	-91.738	50.0	3.1	4	8	SUBDUCCION
291	2013-04-01 05:31	14.406	-90.618	20.5	2.8	3	6	G4
292*	2013-04-01 23:31	15.463	-92.442	0.0	4.1	6	10	REGIONAL
293	2013-04-02 08:41	12.982	-90.168	15.3	3.9	4	7	G1
294	2013-04-02 17:52	14.411	-90.329	1.7	3.1	4	6	G5
295*	2013-04-03 00:06	14.458	-91.972	51.3	3.7	5	7	SUBDUCCION
296*	2013-04-03 00:49	14.204	-93.691	50.0	4.3	7	11	REGIONAL
297*	2013-04-03 01:25	14.487	-91.495	68.7	3.4	4	6	SUBDUCCION
298	2013-04-03 02:13	13.815	-91.497	20.0	3.6	6	9	G1
299	2013-04-03 04:05	13.780	-92.118	21.7	4.0	6	10	G1
300*	2013-04-03 06:15	15.256	-93.421	19.1	4.2	4	7	REGIONAL
301	2013-04-03 15:26	14.308	-90.300	9.5	3.1	5	8	G4
302	2013-04-03 19:55	14.480	-90.522	5.1	3.0	4	5	G4
303	2013-04-04 09:52	14.089	-90.781	114.8	3.6	5	7	SUBDUCCION
304*	2013-04-04 11:33	15.549	-90.062	14.5	3.9	6	9	G6
305	2013-04-04 19:43	13.805	-90.784	76.2	3.6	6	9	SUBDUCCION
306*	2013-04-04 20:00	15.014	-91.162	56.9	3.8	7	7	SUBDUCCION
307	2013-04-04 21:08	14.837	-91.220	47.2	3.3	3	6	SUBDUCCION
308*	2013-04-04 21:43	13.478	-89.442	93.9	3.8	4	8	REGIONAL
309*	2013-04-05 15:01	15.374	-92.631	50.0	4.4	7	11	REGIONAL
310*	2013-04-05 19:13	15.562	-91.118	24.1	3.7	3	4	G6
311*	2013-04-05 19:19	14.161	-91.679	15.0	3.7	4	8	G2
312	2013-04-06 00:26	14.653	-91.909	52.9	3.7	6	9	SUBDUCCION
313*	2013-04-06 04:59	12.031	-88.657	0.0	4.6	7	9	REGIONAL
314	2013-04-07 00:51	14.234	-90.891	132.1	3.7	6	8	SUBDUCCION
315	2013-04-07 01:15	13.730	-91.013	46.3	3.0	6	9	SUBDUCCION
316*	2013-04-07 16:31	14.139	-90.395	0.0	3.2	5	5	G4
317*	2013-04-08 15:22	12.642	-90.877	35.3	4.2	6	8	SUBDUCCION
318*	2013-04-08 17:05	13.254	-89.849	28.1	3.7	4	8	REGIONAL
319*	2013-04-08 22:40	14.591	-91.673	24.8	4.0	6	6	G2
320	2013-04-09 01:16	13.825	-91.188	89.8	3.6	4	5	SUBDUCCION
321	2013-04-09 04:46	13.899	-91.361	100.3	3.6	4	8	SUBDUCCION
322*	2013-04-09 09:49	13.837	-92.054	50.0	4.1	7	9	SUBDUCCION
323*	2013-04-09 10:10	13.979	-92.646	20.9	4.4	5	7	G1
324	2013-04-09 13:37	13.309	-90.092	24.2	3.7	5	9	G2
325*	2013-04-09 17:44	13.309	-90.173	0.8	3.7	3	5	G2
326*	2013-04-09 18:38	16.045	-93.679	24.2	4.4	6	9	REGIONAL

Continua en la siguiente página...

Cuadro 4: ...continuación

No.	Tiempo de origen	Lat	Lon	Prof	M	NST	NF	ZS
327	2013-04-09 21:57	13.138	-91.049	19.2	4.0	3	6	G1
328*	2013-04-09 22:28	13.589	-90.613	28.9	3.8	5	9	SUBDUCCION
329*	2013-04-09 23:58	12.339	-89.094	47.9	4.3	6	7	REGIONAL
330*	2013-04-10 13:14	14.862	-88.280	164.3	5.2	5	5	REGIONAL
331*	2013-04-10 20:03	14.033	-90.921	60.3	4.1	5	7	SUBDUCCION
332*	2013-04-10 20:15	13.599	-92.267	91.7	4.2	7	7	SUBDUCCION
333*	2013-04-10 21:32	13.729	-90.743	35.1	4.3	5	9	SUBDUCCION
334*	2013-04-10 23:07	13.726	-89.435	96.8	4.0	5	9	REGIONAL
335*	2013-04-10 23:26	14.504	-90.323	5.1	3.3	4	6	G5
336	2013-04-11 03:02	14.834	-91.507	145.2	4.3	8	13	SUBDUCCION
337	2013-04-11 03:14	13.957	-91.837	10.9	4.0	5	8	G1
338	2013-04-11 11:55	13.831	-90.977	30.3	3.9	5	10	SUBDUCCION
339	2013-04-11 14:02	13.781	-90.723	50.0	3.2	4	7	SUBDUCCION
340	2013-04-11 15:49	14.730	-90.851	205.4	4.3	5	6	SUBDUCCION
341*	2013-04-11 17:57	13.439	-92.793	18.3	4.5	6	6	G1
342*	2013-04-11 21:14	13.309	-88.441	137.4	4.7	4	6	REGIONAL
343	2013-04-11 21:25	15.029	-90.275	32.0	4.5	7	8	G6
344*	2013-04-11 21:47	15.146	-91.176	66.4	3.9	6	6	SUBDUCCION
345*	2013-04-12 11:07	14.735	-93.088	34.5	4.2	4	6	REGIONAL
346*	2013-04-12 13:14	13.896	-91.659	13.9	3.5	5	7	G1
347	2013-04-12 21:21	14.217	-90.320	2.7	2.8	4	4	G4
348	2013-04-12 22:02	14.181	-90.288	7.6	2.8	4	7	G4
349	2013-04-13 01:47	14.191	-90.252	10.9	3.0	4	7	G4
350	2013-04-13 01:56	14.202	-90.255	6.4	3.2	5	8	G4
351*	2013-04-13 05:21	15.010	-92.744	0.0	4.2	6	10	REGIONAL
352*	2013-04-13 05:58	15.331	-92.326	108.8	4.1	5	9	REGIONAL
353	2013-04-13 07:26	14.733	-90.939	7.1	3.4	5	8	G5
354*	2013-04-13 11:47	13.704	-89.929	78.9	3.4	4	7	SUBDUCCION
355	2013-04-13 21:02	14.224	-90.249	0.0	3.1	4	6	G4
356*	2013-04-13 23:53	14.194	-90.262	8.6	3.0	4	4	G4
357	2013-04-14 18:53	13.989	-91.588	30.6	3.9	6	11	SUBDUCCION
358*	2013-04-14 18:58	14.451	-90.675	165.1	4.1	4	6	SUBDUCCION
359*	2013-04-14 19:38	15.175	-92.277	50.0	4.1	4	8	SUBDUCCION
360*	2013-04-14 21:32	12.215	-88.526	0.0	4.4	7	8	REGIONAL
361	2013-04-15 00:40	14.160	-91.363	45.1	3.9	5	9	SUBDUCCION
362	2013-04-15 13:58	14.472	-91.467	76.6	4.5	6	10	SUBDUCCION
363	2013-04-15 20:08	13.988	-91.832	23.8	4.4	6	9	G1
364*	2013-04-16 04:09	14.816	-89.351	13.6	3.9	4	6	G5
365*	2013-04-16 11:04	15.454	-91.899	42.5	3.6	4	6	SUBDUCCION
366*	2013-04-16 20:41	13.664	-90.296	54.3	3.2	5	8	SUBDUCCION
367	2013-04-16 23:24	13.688	-91.799	0.0	4.0	5	7	G1
368*	2013-04-17 04:44	17.264	-93.581	27.0	4.6	7	10	REGIONAL
369*	2013-04-17 13:19	12.735	-91.065	29.7	4.5	6	6	SUBDUCCION
370*	2013-04-17 13:27	13.705	-91.008	35.4	3.9	6	8	SUBDUCCION
371	2013-04-18 06:37	15.487	-91.994	161.1	4.3	8	15	SUBDUCCION
372*	2013-04-18 18:29	14.464	-90.986	108.0	3.1	4	6	SUBDUCCION

Continua en la siguiente página...

Cuadro 4: ...continuación

No.	Tiempo de origen	Lat	Lon	Prof	M	NST	NF	ZS
373*	2013-04-19 02:13	14.141	-91.320	50.0	3.1	3	6	SUBDUCCION
374*	2013-04-19 02:31	12.710	-90.294	20.4	4.0	6	6	G1
375*	2013-04-19 02:37	13.234	-90.297	12.9	3.8	3	5	G1
376*	2013-04-19 11:04	14.597	-90.505	8.2	2.9	3	5	G5
377	2013-04-19 14:55	14.434	-91.723	57.4	3.7	6	8	SUBDUCCION
378*	2013-04-19 18:47	12.823	-88.448	0.0	4.5	5	9	REGIONAL
379*	2013-04-19 20:11	14.688	-91.848	56.9	4.0	4	6	SUBDUCCION
380	2013-04-20 02:35	15.080	-91.427	26.0	3.9	3	4	SUBDUCCION
381*	2013-04-20 02:55	12.035	-89.560	33.2	4.5	6	8	REGIONAL
382*	2013-04-20 03:33	12.018	-89.735	50.0	4.4	5	6	REGIONAL
383*	2013-04-20 04:19	13.967	-88.428	97.5	4.3	4	6	REGIONAL
384*	2013-04-20 13:28	13.436	-89.921	25.6	4.3	4	4	SUBDUCCION
385*	2013-04-21 00:35	13.746	-91.372	50.0	3.9	6	7	SUBDUCCION
386*	2013-04-21 01:46	16.562	-85.887	0.0	4.8	5	7	DISTANTE
387*	2013-04-21 16:06	15.710	-89.350	0.0	3.8	5	10	G6
388*	2013-04-21 17:59	12.400	-89.456	0.0	4.3	7	9	REGIONAL
389*	2013-04-21 20:44	13.249	-92.311	17.3	4.2	7	7	G1
390*	2013-04-22 00:54	13.780	-92.020	0.0	3.6	5	7	G1
391	2013-04-22 00:55	13.871	-91.676	26.7	3.4	6	11	SUBDUCCION
392*	2013-04-22 01:17	13.256	-92.172	34.9	4.2	6	9	SUBDUCCION
393*	2013-04-22 05:20	12.267	-90.646	48.4	4.2	5	7	REGIONAL
394*	2013-04-22 05:33	12.611	-90.772	9.0	4.1	6	10	G1
395*	2013-04-23 00:40	15.596	-90.962	12.8	3.3	5	10	G6
396*	2013-04-23 05:59	12.051	-89.335	0.0	4.3	6	8	REGIONAL
397*	2013-04-23 06:52	12.674	-89.301	33.2	4.0	4	6	REGIONAL
398*	2013-04-23 07:22	16.157	-90.393	35.2	3.9	4	7	G8
399*	2013-04-23 11:25	13.624	-92.555	36.7	3.9	5	8	SUBDUCCION
400*	2013-04-23 20:04	16.548	-85.809	50.0	5.2	7	12	DISTANTE
401*	2013-04-23 20:15	16.484	-86.426	37.4	4.8	5	8	DISTANTE
402*	2013-04-23 20:41	16.327	-88.883	3.0	4.4	5	5	G8
403	2013-04-24 01:09	13.731	-90.879	32.9	3.9	5	7	SUBDUCCION
404*	2013-04-24 15:39	13.217	-89.647	33.3	4.2	5	7	REGIONAL
405	2013-04-24 23:10	13.179	-89.187	22.2	4.1	6	10	REGIONAL
406	2013-04-25 01:41	13.976	-91.254	55.3	3.5	4	6	SUBDUCCION
407	2013-04-25 02:11	13.497	-90.510	30.3	4.1	6	10	SUBDUCCION
408*	2013-04-25 06:08	12.611	-89.171	78.3	4.4	5	7	REGIONAL
409*	2013-04-25 08:28	15.640	-91.619	35.0	3.9	3	4	SUBDUCCION
410*	2013-04-25 08:44	13.870	-92.050	0.0	4.3	5	6	G1
411	2013-04-25 11:25	13.038	-89.473	20.8	3.9	5	7	REGIONAL
412*	2013-04-25 22:09	13.391	-90.018	58.9	3.9	4	8	SUBDUCCION
413*	2013-04-26 00:40	14.630	-89.947	97.3	4.1	3	5	SUBDUCCION
414*	2013-04-26 01:32	12.715	-88.468	52.8	4.4	6	9	REGIONAL
415	2013-04-26 02:54	14.211	-91.299	50.0	3.8	5	9	SUBDUCCION
416	2013-04-26 04:23	15.197	-89.246	32.9	3.9	4	7	G6
417	2013-04-26 04:49	14.404	-91.750	55.4	4.3	6	10	SUBDUCCION
418	2013-04-26 05:52	14.426	-91.794	31.9	4.0	4	7	SUBDUCCION

Continua en la siguiente página...

Cuadro 4: ...continuación

No.	Tiempo de origen	Lat	Lon	Prof	M	NST	NF	ZS
419	2013-04-26 09:32	14.303	-90.300	12.6	3.1	4	6	G4
420*	2013-04-27 05:09	14.126	-92.569	23.5	3.8	6	11	G1
421*	2013-04-27 10:05	12.404	-89.366	95.6	4.0	5	10	REGIONAL
422*	2013-04-27 14:04	14.570	-91.682	113.5	3.8	5	10	SUBDUCCION
423	2013-04-27 19:12	14.835	-90.492	9.4	3.2	5	10	G6
424*	2013-04-28 00:36	14.627	-92.474	0.0	4.0	6	12	G2
425*	2013-04-28 05:12	13.688	-92.432	19.6	4.1	5	10	G1
426*	2013-04-28 16:30	13.615	-92.058	7.6	3.8	6	10	G1
427*	2013-04-28 23:39	13.774	-86.890	117.5	4.2	6	12	DISTANTE
428*	2013-04-29 16:05	17.814	-89.483	35.7	4.3	4	8	G8
429	2013-04-29 19:34	14.263	-90.286	6.1	2.9	4	6	G4
430*	2013-04-29 20:05	13.157	-89.603	44.9	3.9	6	12	REGIONAL
431*	2013-04-29 20:39	13.857	-91.006	50.0	3.1	3	4	SUBDUCCION
432	2013-04-29 23:00	13.982	-91.217	53.8	3.6	6	10	SUBDUCCION
433	2013-04-30 01:48	13.696	-91.018	35.0	3.4	6	10	SUBDUCCION
434*	2013-04-30 04:10	15.202	-93.302	30.0	4.3	6	10	REGIONAL
435	2013-04-30 04:58	14.297	-90.427	6.0	2.5	4	8	G4
436*	2013-04-30 05:13	12.050	-86.878	131.6	4.3	6	12	DISTANTE
437*	2013-04-30 05:58	14.260	-90.271	0.0	4.3	8	8	G4
438	2013-04-30 06:22	14.262	-90.274	7.2	2.7	4	7	G4
439*	2013-04-30 11:29	13.811	-91.659	50.8	3.8	7	9	SUBDUCCION
440	2013-04-30 15:24	14.249	-90.280	8.4	2.4	5	8	G4
441	2013-04-30 15:32	13.527	-90.747	24.9	3.4	4	7	G1
442	2013-04-30 19:19	13.856	-91.816	8.1	3.9	6	10	G1
443	2013-05-01 05:30	13.651	-92.102	0.0	3.8	6	9	G1
444	2013-05-01 15:46	14.281	-90.276	7.7	2.7	4	6	G4
445*	2013-05-02 04:17	13.717	-90.828	99.5	3.8	7	9	SUBDUCCION
446*	2013-05-02 05:21	13.701	-92.347	25.9	3.8	5	8	SUBDUCCION
447	2013-05-02 06:49	14.559	-90.676	2.7	2.8	3	6	G4
448	2013-05-02 06:52	14.056	-91.921	30.1	3.8	6	7	SUBDUCCION
449	2013-05-02 13:41	14.270	-90.335	8.6	2.5	3	5	G4
450	2013-05-03 02:30	14.209	-90.234	6.0	2.7	4	7	G4
451	2013-05-03 23:49	14.121	-89.768	6.1	3.0	6	10	G4
452	2013-05-04 15:06	15.099	-92.979	7.2	4.1	7	10	REGIONAL
453*	2013-05-04 18:42	16.048	-86.859	30.4	4.8	7	10	DISTANTE
454*	2013-05-04 20:20	14.022	-91.304	50.0	3.1	3	6	SUBDUCCION
455*	2013-05-05 06:49	15.117	-91.784	118.2	3.6	3	5	SUBDUCCION
456*	2013-05-05 07:37	14.312	-92.052	61.1	4.0	7	9	SUBDUCCION
457*	2013-05-05 09:03	15.918	-92.024	50.0	4.1	5	7	SUBDUCCION
458*	2013-05-05 14:56	14.477	-92.044	72.9	4.1	6	6	SUBDUCCION
459*	2013-05-05 17:27	14.107	-92.548	50.0	4.4	5	5	SUBDUCCION
460*	2013-05-05 20:15	15.161	-91.145	50.0	3.2	3	6	SUBDUCCION
461	2013-05-06 06:06	13.560	-90.127	50.0	3.2	4	8	SUBDUCCION
462	2013-05-06 13:29	13.168	-89.898	22.0	3.9	5	9	REGIONAL
463*	2013-05-06 16:04	13.955	-91.574	50.0	3.2	6	12	SUBDUCCION
464	2013-05-06 21:22	13.595	-90.845	28.2	3.4	6	7	SUBDUCCION

Continua en la siguiente página...

Cuadro 4: ...continuación

No.	Tiempo de origen	Lat	Lon	Prof	M	NST	NF	ZS
465	2013-05-07 08:08	14.310	-90.531	9.0	2.5	4	7	G4
466*	2013-05-07 08:27	14.018	-91.931	0.0	3.8	6	8	G1
467*	2013-05-07 17:59	13.358	-89.816	50.0	3.3	3	6	SUBDUCCION
468	2013-05-08 09:11	14.217	-90.253	8.6	2.6	5	7	G4
469*	2013-05-08 23:25	14.137	-92.695	48.3	4.3	8	12	SUBDUCCION
470*	2013-05-09 02:01	15.185	-92.245	98.4	3.8	5	8	SUBDUCCION
471*	2013-05-09 06:11	14.254	-91.702	55.0	3.6	7	10	SUBDUCCION
472*	2013-05-09 21:44	14.082	-91.427	52.0	3.2	5	9	SUBDUCCION
473*	2013-05-10 01:17	14.061	-91.425	50.0	3.1	5	7	SUBDUCCION
474	2013-05-10 04:03	15.160	-92.522	22.9	4.2	7	12	REGIONAL
475*	2013-05-10 04:08	15.166	-92.699	59.4	4.3	8	11	REGIONAL
476*	2013-05-10 14:49	13.640	-91.918	65.3	4.8	8	8	SUBDUCCION
477*	2013-05-10 15:20	14.388	-91.577	85.7	3.2	3	6	SUBDUCCION
478*	2013-05-10 20:01	14.055	-91.672	13.1	3.4	5	7	G2
479*	2013-05-10 21:56	14.574	-90.540	6.9	2.5	3	6	G5
480	2013-05-10 23:29	14.179	-91.446	66.6	4.1	8	8	SUBDUCCION
481*	2013-05-11 16:54	13.672	-90.765	43.8	3.4	6	10	SUBDUCCION
482*	2013-05-11 20:06	12.988	-91.805	123.1	4.3	7	8	SUBDUCCION
483*	2013-05-12 01:29	12.881	-91.801	30.0	5.0	8	8	SUBDUCCION
484*	2013-05-12 02:33	13.042	-91.912	9.9	4.1	6	6	G1
485	2013-05-12 05:41	14.249	-90.278	8.9	2.5	5	7	G4
486*	2013-05-12 05:59	13.729	-91.399	37.3	3.6	6	9	SUBDUCCION
487*	2013-05-12 06:07	13.685	-91.193	8.3	3.7	5	5	G1
488*	2013-05-12 08:10	12.832	-91.827	2.7	3.9	5	5	REGIONAL
489*	2013-05-12 11:37	13.613	-92.281	0.0	4.1	6	8	G1
490*	2013-05-12 11:40	13.579	-92.670	35.9	4.3	8	9	SUBDUCCION
491	2013-05-12 14:57	13.927	-90.263	133.9	3.5	5	6	SUBDUCCION
492*	2013-05-13 07:05	13.856	-92.673	20.0	4.0	6	9	G1
493	2013-05-14 01:30	13.794	-90.885	66.0	3.0	5	10	SUBDUCCION
494	2013-05-14 05:13	13.406	-90.642	32.4	3.4	6	10	SUBDUCCION
495	2013-05-14 10:06	13.273	-89.900	24.7	3.8	6	8	G2
496*	2013-05-14 10:31	14.380	-91.411	55.9	3.5	4	6	SUBDUCCION
497	2013-05-14 13:43	14.135	-91.324	51.7	3.9	6	9	SUBDUCCION
498	2013-05-15 01:41	14.771	-90.898	52.0	3.9	4	4	SUBDUCCION
499	2013-05-15 03:47	13.658	-90.958	25.8	3.7	4	6	SUBDUCCION
500*	2013-05-15 04:07	14.299	-90.353	1.3	2.7	3	5	G4
501*	2013-05-15 07:20	12.961	-88.905	28.4	4.4	6	6	REGIONAL
502	2013-05-15 08:51	13.917	-91.622	34.1	3.3	4	6	SUBDUCCION
503*	2013-05-15 09:27	12.757	-90.773	2.9	3.6	3	5	G1
504	2013-05-15 21:25	13.728	-90.622	31.7	3.8	5	6	SUBDUCCION
505*	2013-05-15 23:40	12.870	-91.397	17.3	4.0	5	7	G1
506	2013-05-16 01:22	13.215	-91.557	16.5	4.0	7	10	G1
507*	2013-05-16 08:03	14.445	-91.786	65.7	3.5	3	6	SUBDUCCION
508	2013-05-16 08:15	15.071	-91.989	47.0	4.5	7	7	SUBDUCCION
509*	2013-05-16 11:42	13.823	-89.029	35.1	3.6	4	6	REGIONAL
510	2013-05-16 12:00	13.519	-91.495	2.4	4.1	5	5	G1

Continua en la siguiente página...

Cuadro 4: ...continuación

No.	Tiempo de origen	Lat	Lon	Prof	M	NST	NF	ZS
511	2013-05-17 13:02	13.192	-90.471	19.0	3.8	4	7	G1
512*	2013-05-17 13:53	13.886	-91.476	13.4	3.7	3	5	G1
513	2013-05-17 16:15	13.284	-90.437	9.2	3.7	4	7	G1
514*	2013-05-17 20:40	15.340	-90.588	13.2	3.5	4	7	G6
515*	2013-05-18 15:40	14.135	-91.410	46.5	3.3	4	8	SUBDUCCION
516*	2013-05-18 20:23	15.561	-92.821	34.9	4.0	4	7	REGIONAL
517	2013-05-18 23:09	13.866	-91.458	24.7	3.3	5	9	G1
518	2013-05-19 00:07	14.234	-90.270	9.1	2.8	4	5	G4
519*	2013-05-19 00:16	13.119	-88.740	224.8	4.0	4	7	REGIONAL
520*	2013-05-19 05:54	13.749	-92.606	77.3	4.1	6	10	SUBDUCCION
521	2013-05-19 08:19	13.788	-90.850	44.2	3.4	5	9	SUBDUCCION
522*	2013-05-19 16:26	13.261	-91.550	29.9	3.9	5	5	SUBDUCCION
523*	2013-05-19 18:36	13.318	-90.890	27.6	4.1	5	5	SUBDUCCION
524*	2013-05-19 19:28	14.163	-89.036	61.8	3.8	3	5	REGIONAL
525*	2013-05-19 20:11	12.492	-89.503	143.5	4.2	4	6	REGIONAL
526*	2013-05-19 21:30	13.766	-89.685	14.2	4.1	3	4	G4
527*	2013-05-20 02:44	13.930	-92.437	24.2	4.1	5	7	G1
528*	2013-05-20 03:41	13.848	-92.434	13.2	4.2	5	6	G1
529*	2013-05-20 04:27	13.883	-91.602	13.1	3.6	4	7	G1
530*	2013-05-20 11:50	14.393	-90.706	3.4	3.4	3	4	G4
531	2013-05-20 15:52	14.177	-89.779	6.7	3.6	6	8	G5
532*	2013-05-20 20:44	14.287	-89.140	20.9	3.5	3	5	REGIONAL
533*	2013-05-21 02:41	15.774	-92.096	99.4	4.8	8	8	SUBDUCCION
534*	2013-05-21 09:07	13.681	-89.800	50.0	3.5	3	3	SUBDUCCION
535*	2013-05-21 09:55	15.449	-92.136	50.0	3.9	5	6	SUBDUCCION
536*	2013-05-21 21:13	13.627	-90.850	37.9	3.0	6	11	SUBDUCCION
537	2013-05-21 21:44	13.421	-90.286	25.4	3.6	6	10	SUBDUCCION
538	2013-05-22 06:15	13.911	-91.742	22.7	3.6	5	7	G1
539*	2013-05-22 15:56	15.577	-91.103	50.0	3.5	5	6	G6
540*	2013-05-23 07:15	13.987	-92.411	101.0	4.1	6	8	SUBDUCCION
541*	2013-05-23 21:38	13.155	-89.791	34.9	3.6	4	6	REGIONAL
542*	2013-05-24 01:32	14.420	-91.869	56.9	3.9	7	11	SUBDUCCION
543*	2013-05-24 07:22	14.208	-92.410	50.0	4.1	6	8	SUBDUCCION
544*	2013-05-24 11:46	14.011	-91.531	34.3	3.2	3	6	SUBDUCCION
545	2013-05-24 14:12	14.257	-90.723	10.9	3.2	6	9	G4
546*	2013-05-24 14:53	15.917	-91.762	50.0	4.0	6	8	SUBDUCCION
547	2013-05-24 20:08	13.511	-91.493	5.6	4.4	6	6	G1
548*	2013-05-25 00:14	14.891	-92.793	6.0	4.0	3	5	REGIONAL
549*	2013-05-25 01:02	12.989	-91.620	50.0	4.0	5	7	SUBDUCCION
550*	2013-05-25 04:09	12.885	-91.929	7.2	3.8	4	4	REGIONAL
551	2013-05-25 05:14	15.513	-90.877	53.8	3.8	3	4	G6
552*	2013-05-25 05:36	14.897	-92.093	72.7	3.8	3	4	SUBDUCCION
553*	2013-05-25 07:24	13.733	-91.951	80.4	4.0	7	7	SUBDUCCION
554*	2013-05-25 16:06	13.783	-92.576	50.0	4.0	3	4	SUBDUCCION
555*	2013-05-25 19:08	15.102	-92.421	34.1	3.9	3	5	REGIONAL
556	2013-05-25 22:18	13.727	-90.837	49.1	3.8	5	7	SUBDUCCION

Continua en la siguiente página...

Cuadro 4: ...continuación

No.	Tiempo de origen	Lat	Lon	Prof	M	NST	NF	ZS
557*	2013-05-26 01:05	15.024	-92.382	60.3	3.8	5	8	SUBDUCCION
558*	2013-05-26 01:09	14.378	-90.485	6.4	2.5	3	6	G4
559*	2013-05-26 04:12	15.509	-92.447	88.9	3.8	3	5	REGIONAL
560*	2013-05-26 07:38	13.610	-90.897	52.4	3.5	6	9	SUBDUCCION
561	2013-05-26 09:49	13.549	-90.508	30.7	3.6	5	10	SUBDUCCION
562*	2013-05-26 11:48	15.736	-92.367	10.0	4.2	4	7	REGIONAL
563*	2013-05-26 21:21	16.095	-92.261	162.0	4.3	6	7	REGIONAL
564	2013-05-27 01:10	14.271	-90.287	8.0	2.7	4	7	G4
565*	2013-05-27 07:03	14.601	-89.183	12.8	3.3	5	8	G5
566*	2013-05-27 07:27	14.594	-89.135	13.2	3.4	3	7	G5
567*	2013-05-27 20:45	11.226	-87.955	36.0	4.6	4	8	DISTANTE
568*	2013-05-28 01:56	13.988	-91.641	50.0	3.7	6	10	SUBDUCCION
569*	2013-05-28 22:24	14.585	-88.999	0.0	3.8	6	9	G5
570*	2013-05-29 02:19	14.591	-89.167	5.1	3.3	4	8	G5
571*	2013-05-29 04:57	14.139	-91.276	172.5	3.7	5	10	SUBDUCCION
572*	2013-05-29 11:23	14.094	-86.911	155.0	4.5	4	8	DISTANTE
573	2013-05-29 13:25	13.660	-91.154	36.7	3.9	7	9	SUBDUCCION
574*	2013-05-29 15:20	15.011	-90.923	61.9	3.0	3	6	SUBDUCCION
575	2013-05-29 21:37	13.732	-91.593	21.4	3.7	5	5	G1
576*	2013-05-30 01:54	14.051	-90.033	85.7	3.4	3	6	SUBDUCCION
577*	2013-05-30 03:02	12.920	-88.817	50.0	4.3	6	9	REGIONAL
578*	2013-05-30 08:30	13.861	-89.060	51.3	3.9	3	6	REGIONAL
579	2013-05-30 08:45	13.420	-90.463	19.8	3.8	4	5	G2
580*	2013-05-30 15:02	13.583	-91.716	34.8	3.6	4	4	SUBDUCCION
581*	2013-05-30 17:35	13.341	-90.417	142.3	4.0	3	4	SUBDUCCION
582*	2013-05-31 01:46	15.642	-91.465	1.0	3.8	6	10	G6
583*	2013-05-31 01:55	14.526	-92.425	24.1	4.0	4	6	G2
584*	2013-05-31 02:07	13.632	-91.194	13.4	3.5	4	6	G1
585*	2013-05-31 04:14	13.674	-92.383	77.0	3.9	6	6	SUBDUCCION
586*	2013-05-31 07:31	14.681	-91.596	88.9	3.6	3	4	SUBDUCCION
587	2013-05-31 20:00	14.167	-90.216	45.9	2.8	4	5	SUBDUCCION
588	2013-05-31 22:36	13.423	-91.457	8.9	4.4	6	8	G1
589*	2013-05-31 22:40	13.364	-91.745	35.1	4.1	4	6	SUBDUCCION
590*	2013-05-31 22:51	13.740	-91.075	23.0	3.0	4	6	G2
591	2013-06-01 00:34	13.515	-91.598	13.5	3.7	5	7	G1
592	2013-06-01 11:49	14.327	-91.556	58.7	4.0	5	6	SUBDUCCION
593*	2013-06-01 14:16	13.520	-89.276	31.1	3.7	3	6	REGIONAL
594*	2013-06-02 11:05	15.544	-90.962	48.8	3.9	3	5	G6
595	2013-06-02 18:16	13.960	-91.452	25.5	3.4	4	8	SUBDUCCION
596*	2013-06-03 08:48	13.157	-89.909	29.6	3.8	5	6	REGIONAL
597*	2013-06-04 08:58	13.869	-92.420	36.6	4.3	7	9	SUBDUCCION
598*	2013-06-04 14:08	15.114	-90.716	54.3	3.5	3	5	SUBDUCCION
599	2013-06-05 05:05	14.421	-91.393	30.6	4.0	5	5	SUBDUCCION
600*	2013-06-05 07:32	13.264	-90.098	13.7	3.3	3	6	G2
601*	2013-06-06 20:54	14.222	-91.256	73.8	3.2	4	8	SUBDUCCION
602	2013-06-07 09:42	13.543	-90.725	26.1	3.2	3	6	SUBDUCCION

Continua en la siguiente página...

Cuadro 4: ...continuación

No.	Tiempo de origen	Lat	Lon	Prof	M	NST	NF	ZS
603*	2013-06-07 21:11	15.043	-92.553	46.7	4.0	3	5	REGIONAL
604*	2013-06-07 22:19	13.679	-91.950	76.4	4.5	6	7	SUBDUCCION
605	2013-06-08 01:22	15.157	-91.159	50.0	3.3	3	6	SUBDUCCION
606	2013-06-08 03:32	14.310	-91.581	106.1	4.0	4	5	SUBDUCCION
607	2013-06-08 11:44	13.709	-90.476	72.0	3.9	5	5	SUBDUCCION
608*	2013-06-08 13:42	13.222	-90.887	15.5	3.6	5	5	G1
609*	2013-06-08 13:42	13.198	-90.935	8.2	3.6	5	6	G1
610*	2013-06-08 16:52	14.428	-91.004	95.0	3.1	3	5	SUBDUCCION
611*	2013-06-09 00:30	14.777	-91.852	83.2	3.5	4	6	SUBDUCCION
612*	2013-06-09 03:09	14.556	-92.495	76.0	3.5	4	6	SUBDUCCION
613*	2013-06-09 10:38	14.968	-91.154	50.0	3.3	3	6	SUBDUCCION
614*	2013-06-09 12:24	13.932	-91.595	52.8	3.4	4	7	SUBDUCCION
615*	2013-06-09 21:02	14.693	-90.562	12.6	2.6	3	4	G5
616*	2013-06-10 00:07	13.898	-92.522	80.8	3.9	4	6	SUBDUCCION
617	2013-06-10 03:21	13.531	-90.505	32.2	3.5	4	6	SUBDUCCION
618	2013-06-10 08:40	14.646	-90.749	12.8	2.8	4	6	G5
619	2013-06-10 09:03	14.687	-90.746	4.6	2.7	3	5	G5
620*	2013-06-11 04:05	15.216	-90.132	50.0	3.3	3	4	G6
621	2013-06-11 15:35	14.698	-89.079	11.3	3.4	4	6	G5
622*	2013-06-12 01:54	13.650	-91.897	71.5	4.7	7	7	SUBDUCCION
623	2013-06-12 17:42	14.550	-91.714	48.7	3.6	5	8	SUBDUCCION
624*	2013-06-13 14:28	13.081	-89.355	31.5	3.9	4	8	REGIONAL
625	2013-06-13 16:33	14.624	-89.196	12.5	3.3	4	6	G5
626	2013-06-14 07:32	14.413	-90.699	6.4	2.9	4	5	G4
627*	2013-06-14 10:07	13.970	-91.580	13.1	3.4	4	5	G2
628*	2013-06-14 11:41	15.014	-89.858	50.0	3.7	3	6	G6
629	2013-06-14 22:21	15.285	-91.731	127.8	4.2	7	9	SUBDUCCION
630*	2013-06-14 23:57	13.880	-92.051	27.2	3.7	4	5	SUBDUCCION
631*	2013-06-15 07:08	12.866	-88.868	23.4	4.4	6	6	REGIONAL
632*	2013-06-15 08:00	13.649	-92.183	50.0	4.5	6	7	SUBDUCCION
633	2013-06-15 09:00	14.386	-90.613	14.4	2.8	3	5	G4
634*	2013-06-15 09:29	12.826	-91.418	35.3	4.0	5	6	SUBDUCCION
635*	2013-06-15 11:34	11.098	-87.604	28.2	5.4	6	6	DISTANTE
636*	2013-06-15 14:07	14.222	-90.193	6.1	2.9	4	4	G4
637*	2013-06-16 02:22	13.407	-93.018	188.6	4.4	5	5	REGIONAL
638*	2013-06-16 02:46	14.643	-89.170	5.2	3.7	5	9	G5
639*	2013-06-16 02:58	14.656	-89.216	8.9	3.4	5	7	G5
640*	2013-06-16 03:31	13.773	-91.815	4.7	4.0	6	8	G1
641	2013-06-16 04:30	13.744	-90.759	64.0	3.6	5	6	SUBDUCCION
642	2013-06-16 06:10	13.852	-91.925	21.5	3.8	4	5	G1
643*	2013-06-16 06:35	13.703	-90.806	57.2	3.5	4	7	SUBDUCCION
644*	2013-06-16 10:28	14.216	-91.363	55.7	3.5	4	6	SUBDUCCION
645*	2013-06-16 19:52	15.134	-92.310	50.0	4.2	5	7	SUBDUCCION
646*	2013-06-17 04:40	14.068	-91.320	64.5	4.0	7	7	SUBDUCCION
647	2013-06-17 08:52	13.483	-89.769	26.3	3.7	4	6	SUBDUCCION
648*	2013-06-17 09:13	11.264	-88.349	0.0	4.8	7	9	DISTANTE

Continua en la siguiente página...

Cuadro 4: ...continuación

No.	Tiempo de origen	Lat	Lon	Prof	M	NST	NF	ZS
649*	2013-06-17 17:21	13.622	-91.436	38.1	3.6	5	8	SUBDUCCION
650*	2013-06-17 18:36	14.346	-91.617	60.0	3.5	4	6	SUBDUCCION
651*	2013-06-18 02:02	13.961	-92.171	50.0	4.0	3	4	SUBDUCCION
652	2013-06-18 18:05	14.101	-89.708	10.4	2.9	4	7	G4
653*	2013-06-18 19:18	13.942	-91.328	49.4	3.0	3	5	SUBDUCCION
654*	2013-06-19 03:28	14.785	-91.775	115.6	3.5	3	5	SUBDUCCION
655*	2013-06-19 16:25	13.361	-91.098	0.0	4.0	5	5	G1
656*	2013-06-19 16:35	13.299	-91.076	28.3	4.0	5	5	SUBDUCCION
657*	2013-06-19 17:22	12.929	-91.140	16.1	3.7	5	5	G1
658*	2013-06-20 00:32	13.918	-91.438	13.2	3.8	4	7	G2
659*	2013-06-20 05:35	13.255	-91.117	15.3	4.0	5	5	G1
660	2013-06-20 09:29	13.621	-90.866	26.9	3.9	5	6	SUBDUCCION
661*	2013-06-20 15:04	13.054	-91.163	1.6	3.7	5	5	G1
662*	2013-06-21 05:04	13.911	-92.328	56.3	4.4	7	8	SUBDUCCION
663*	2013-06-21 10:21	13.620	-90.945	24.2	3.8	5	6	G1
664*	2013-06-21 10:34	14.408	-91.749	65.3	3.9	5	5	SUBDUCCION
665*	2013-06-21 14:30	16.075	-93.682	31.2	4.4	3	6	REGIONAL
666*	2013-06-21 16:14	14.541	-91.911	55.4	4.2	5	5	SUBDUCCION
667*	2013-06-21 21:50	13.878	-91.629	31.2	3.1	3	5	SUBDUCCION
668*	2013-06-21 22:34	14.834	-91.624	83.9	3.1	3	6	SUBDUCCION
669	2013-06-22 04:59	13.036	-89.543	10.3	3.9	5	8	REGIONAL
670*	2013-06-22 11:35	11.976	-88.326	0.1	4.9	5	7	DISTANTE
671*	2013-06-22 11:47	14.688	-91.349	62.7	3.6	4	6	SUBDUCCION
672*	2013-06-22 12:52	13.518	-91.324	43.4	3.7	4	6	SUBDUCCION
673*	2013-06-22 16:03	14.881	-91.910	103.1	3.4	4	6	SUBDUCCION
674*	2013-06-22 19:44	15.157	-92.525	22.9	3.8	4	7	REGIONAL
675*	2013-06-22 21:54	13.536	-92.076	10.1	3.7	4	5	G1
676	2013-06-23 00:28	15.510	-90.875	0.7	3.3	4	4	G6
677*	2013-06-23 02:00	14.886	-91.377	149.4	3.9	4	5	SUBDUCCION
678	2013-06-23 03:05	15.712	-91.096	6.1	3.3	6	8	G6
679	2013-06-23 10:38	14.859	-91.648	69.6	3.7	4	5	SUBDUCCION
680	2013-06-23 14:48	13.615	-90.847	23.2	3.4	4	6	G2
681	2013-06-23 15:33	13.792	-91.755	0.0	3.6	5	5	G1
682*	2013-06-23 20:41	13.764	-91.743	7.9	3.7	3	5	G1
683*	2013-06-27 03:44	13.754	-91.390	13.2	3.4	4	7	G1
684*	2013-06-27 05:15	13.548	-91.958	0.0	4.1	4	5	G1
685*	2013-06-27 06:17	13.413	-92.161	34.7	4.1	5	6	SUBDUCCION
686*	2013-06-27 10:48	14.444	-92.248	34.7	3.5	4	7	SUBDUCCION
687*	2013-06-27 13:33	15.160	-90.078	197.8	3.7	4	5	SUBDUCCION
688*	2013-06-27 16:31	16.403	-93.849	35.1	4.5	5	8	REGIONAL
689*	2013-06-29 13:06	15.171	-91.030	13.3	3.0	3	5	G6
690*	2013-06-29 13:33	14.527	-91.951	66.4	3.5	4	6	SUBDUCCION
691*	2013-06-29 20:52	13.455	-91.460	27.1	4.1	6	7	SUBDUCCION
692*	2013-06-29 21:09	13.695	-90.216	68.7	3.3	3	5	SUBDUCCION
693	2013-06-30 01:11	12.919	-90.389	12.8	3.7	3	5	G1
694	2013-06-30 05:05	14.574	-92.003	59.2	3.6	5	6	SUBDUCCION

Continua en la siguiente página...

Cuadro 4: ...continuación

No.	Tiempo de origen	Lat	Lon	Prof	M	NST	NF	ZS
695*	2013-06-30 07:22	15.361	-91.280	81.6	3.5	3	4	SUBDUCCION
696*	2013-07-01 15:50	13.775	-91.043	43.1	2.9	4	8	SUBDUCCION
697*	2013-07-01 16:33	13.831	-90.456	82.0	3.2	4	8	SUBDUCCION
698*	2013-07-02 08:19	14.708	-90.704	88.4	3.3	4	8	SUBDUCCION
699*	2013-07-02 11:42	15.969	-91.109	68.4	3.7	4	8	G6
700	2013-07-02 22:51	14.138	-91.768	28.8	3.2	3	6	SUBDUCCION
701*	2013-07-03 02:57	13.670	-92.340	0.0	4.1	5	8	G1
702	2013-07-03 10:19	13.412	-90.392	21.5	3.3	4	8	G2
703*	2013-07-03 22:05	14.075	-91.075	80.6	3.2	3	6	SUBDUCCION
704*	2013-07-04 04:27	13.081	-89.702	67.3	4.1	5	7	REGIONAL
705*	2013-07-04 10:11	15.741	-91.708	31.3	4.5	4	4	SUBDUCCION
706	2013-07-04 16:12	15.053	-90.528	55.2	3.4	3	5	G6
707*	2013-07-04 19:18	15.056	-91.181	50.0	3.1	3	5	SUBDUCCION
708	2013-07-05 01:04	14.017	-91.597	30.3	3.3	3	5	SUBDUCCION
709*	2013-07-05 01:35	15.135	-92.873	31.4	4.2	3	4	REGIONAL
710	2013-07-05 07:03	15.407	-89.515	77.6	3.4	3	4	G6
711*	2013-07-05 09:43	14.360	-91.679	94.1	3.6	3	4	SUBDUCCION
712*	2013-07-05 13:06	14.604	-91.576	55.3	3.4	3	5	SUBDUCCION
713*	2013-07-05 15:19	14.779	-90.350	78.1	3.4	3	6	SUBDUCCION
714*	2013-07-05 21:45	14.165	-91.740	43.7	3.2	3	6	SUBDUCCION
715*	2013-07-05 22:11	13.532	-90.970	12.7	3.6	4	7	G1
716	2013-07-05 22:23	13.425	-90.943	10.9	3.9	5	7	G1
717*	2013-07-06 04:01	14.881	-91.694	77.7	3.4	3	6	SUBDUCCION
718*	2013-07-06 05:45	14.192	-91.687	65.0	3.6	5	7	SUBDUCCION
719	2013-07-07 15:53	13.434	-90.291	18.1	3.6	4	8	G2
720*	2013-07-07 20:52	11.883	-88.621	0.1	5.5	5	7	DISTANTE
721*	2013-07-07 22:39	14.072	-92.180	137.7	3.8	4	8	SUBDUCCION
722*	2013-07-08 02:51	14.154	-91.201	39.0	3.4	4	6	SUBDUCCION
723*	2013-07-08 23:02	13.824	-92.450	34.0	4.1	4	6	SUBDUCCION
724*	2013-07-09 06:03	13.156	-89.389	66.2	4.2	5	8	REGIONAL
725	2013-07-09 21:39	14.787	-89.675	27.2	3.6	3	6	G5
726*	2013-07-10 04:38	14.320	-92.396	38.8	3.8	3	4	SUBDUCCION
727*	2013-07-11 00:13	14.378	-90.946	90.0	3.5	3	6	SUBDUCCION
728*	2013-07-11 03:30	14.404	-92.534	28.2	4.0	3	4	SUBDUCCION
729	2013-07-11 05:48	14.294	-91.073	31.2	3.8	4	4	SUBDUCCION
730*	2013-07-11 11:13	12.452	-89.990	0.0	4.0	4	8	REGIONAL
731	2013-07-11 12:17	13.900	-91.467	23.5	3.8	4	5	G1
732*	2013-07-12 19:28	14.322	-91.726	53.5	3.8	5	7	SUBDUCCION
733	2013-07-12 21:05	13.815	-90.996	32.8	3.4	4	8	SUBDUCCION
734*	2013-07-13 06:37	14.248	-91.416	56.6	3.6	5	6	SUBDUCCION
735	2013-07-13 07:37	14.263	-90.934	110.7	3.8	6	9	SUBDUCCION
736*	2013-07-13 23:19	14.472	-91.185	84.7	3.2	4	5	SUBDUCCION
737*	2013-07-14 02:20	15.244	-90.972	50.0	3.3	3	4	SUBDUCCION
738*	2013-07-14 06:03	14.267	-93.454	35.0	4.4	4	5	REGIONAL
739*	2013-07-14 13:20	13.893	-92.523	35.0	3.7	3	4	SUBDUCCION
740*	2013-07-14 17:01	14.635	-91.922	50.0	4.4	5	5	SUBDUCCION

Continua en la siguiente página...

Cuadro 4: ...continuación

No.	Tiempo de origen	Lat	Lon	Prof	M	NST	NF	ZS
741*	2013-07-14 23:06	15.576	-92.502	35.1	3.8	3	4	REGIONAL
742*	2013-07-14 23:20	13.456	-90.075	34.6	3.5	4	6	SUBDUCCION
743*	2013-07-15 00:28	13.616	-90.234	102.3	4.5	5	5	SUBDUCCION
744*	2013-07-15 01:24	14.583	-91.533	13.1	4.3	5	5	G3
745*	2013-07-15 07:58	13.318	-92.980	63.5	3.8	3	4	REGIONAL
746*	2013-07-15 11:49	13.343	-90.989	4.5	4.0	4	4	G1
747*	2013-07-15 14:48	14.505	-90.538	94.9	3.0	3	6	SUBDUCCION
748*	2013-07-15 15:59	13.473	-89.499	121.4	4.4	5	6	REGIONAL
749*	2013-07-16 15:12	15.110	-90.450	48.6	3.5	3	6	G6
750	2013-07-16 17:47	13.957	-91.445	24.7	3.5	4	6	G2
751	2013-07-16 21:51	13.201	-90.286	9.1	3.9	4	6	G1
752*	2013-07-17 06:53	13.824	-91.109	57.4	2.9	3	6	SUBDUCCION
753	2013-07-17 13:28	14.151	-90.931	74.8	4.2	5	7	SUBDUCCION
754	2013-07-17 15:51	13.520	-91.702	2.7	4.3	5	6	G1
755*	2013-07-18 00:59	13.736	-92.360	35.0	4.2	6	8	SUBDUCCION
756*	2013-07-18 11:53	14.075	-91.687	34.2	3.5	3	6	SUBDUCCION
757	2013-07-18 12:13	13.415	-90.322	17.3	3.6	4	8	G2
758*	2013-07-18 13:48	13.692	-91.593	0.0	4.9	5	5	G1
759*	2013-07-18 13:52	13.914	-91.599	108.4	4.0	3	5	SUBDUCCION
760*	2013-07-18 14:08	13.549	-91.706	35.2	3.8	3	4	SUBDUCCION
761*	2013-07-18 14:12	13.781	-91.554	16.3	3.6	4	7	G1
762	2013-07-18 14:13	13.661	-91.579	24.3	3.7	4	6	G1
763*	2013-07-18 14:19	14.324	-91.440	116.7	3.5	3	6	SUBDUCCION
764*	2013-07-18 14:32	13.782	-91.544	12.5	3.5	4	5	G1
765*	2013-07-18 14:58	13.686	-92.435	19.7	3.9	3	4	G1
766*	2013-07-18 16:19	15.282	-90.981	58.9	3.7	3	4	SUBDUCCION
767*	2013-07-18 18:44	13.548	-91.309	50.0	3.7	3	3	SUBDUCCION
768	2013-07-18 19:48	15.258	-90.821	60.6	3.5	3	4	SUBDUCCION
769*	2013-07-18 21:43	17.622	-97.087	41.9	4.9	5	6	DISTANTE
770	2013-07-19 05:18	13.629	-91.603	13.9	4.1	4	5	G1
771*	2013-07-19 07:55	14.248	-91.379	112.9	3.8	3	5	SUBDUCCION
772	2013-07-19 08:41	14.390	-90.472	10.8	2.8	3	5	G4
773*	2013-07-19 12:23	13.833	-92.253	25.5	3.8	3	4	SUBDUCCION
774*	2013-07-19 16:33	15.703	-91.763	137.2	4.2	6	6	SUBDUCCION
775*	2013-07-19 17:45	15.364	-90.937	50.0	3.1	3	4	SUBDUCCION
776*	2013-07-19 18:02	12.658	-89.043	0.0	4.2	5	6	REGIONAL
777	2013-07-20 08:09	14.886	-92.293	80.0	3.9	4	5	SUBDUCCION
778	2013-07-21 14:01	15.790	-89.998	21.7	3.2	3	5	G6
779*	2013-07-21 14:41	14.378	-90.379	4.0	3.0	3	6	G4
780*	2013-07-21 16:55	14.224	-93.183	35.0	4.1	4	6	REGIONAL
781*	2013-07-25 12:17	14.824	-91.453	50.0	3.9	3	3	SUBDUCCION
782*	2013-07-25 14:57	14.449	-91.305	50.0	4.3	3	4	SUBDUCCION
783	2013-07-26 17:38	14.541	-90.664	178.7	3.7	6	8	SUBDUCCION
784*	2013-07-26 17:41	14.671	-92.270	157.2	3.8	3	5	SUBDUCCION
785*	2013-07-26 23:08	14.539	-91.731	41.0	4.0	5	5	SUBDUCCION
786*	2013-07-27 00:23	13.820	-92.583	50.0	3.9	3	6	SUBDUCCION

Continua en la siguiente página...

Cuadro 4: ...continuación

No.	Tiempo de origen	Lat	Lon	Prof	M	NST	NF	ZS
787*	2013-07-27 00:58	13.862	-91.966	29.7	3.7	3	4	SUBDUCCION
788*	2013-07-27 04:10	15.603	-92.558	36.1	3.9	5	8	REGIONAL
789*	2013-07-27 10:06	14.268	-91.325	50.4	4.3	6	6	SUBDUCCION
790*	2013-07-27 13:27	13.423	-90.228	27.0	3.5	3	6	SUBDUCCION
791*	2013-07-27 17:30	15.256	-89.248	3.2	4.2	5	7	G6
792*	2013-07-28 01:10	12.093	-91.253	0.0	3.9	3	6	REGIONAL
793*	2013-07-28 18:48	14.963	-91.007	60.5	3.2	3	6	SUBDUCCION
794*	2013-07-28 20:34	16.003	-91.436	72.0	3.7	3	5	G6
795*	2013-07-29 01:27	13.137	-90.093	25.2	3.7	4	7	SUBDUCCION
796*	2013-07-29 10:19	15.126	-90.305	37.4	3.3	3	5	G6
797*	2013-07-29 12:57	14.633	-90.729	26.7	3.7	3	4	SUBDUCCION
798	2013-07-29 21:23	14.575	-90.651	6.7	2.6	4	6	G5
799	2013-07-30 01:30	14.549	-91.470	27.3	4.0	4	4	SUBDUCCION
800*	2013-07-30 07:29	16.093	-93.160	18.4	5.1	5	5	REGIONAL
801*	2013-07-30 11:31	12.781	-90.190	50.0	4.2	3	5	SUBDUCCION
802*	2013-07-31 02:02	14.102	-91.570	8.1	3.1	3	6	G2
803*	2013-07-31 17:18	13.820	-92.596	19.1	4.2	4	4	G1
804*	2013-08-01 06:27	14.506	-92.482	93.6	4.1	5	7	SUBDUCCION
805*	2013-08-01 07:24	14.413	-92.575	89.8	4.0	5	7	SUBDUCCION
806*	2013-08-01 19:07	15.824	-91.793	151.8	4.0	5	8	SUBDUCCION
807*	2013-08-01 19:38	13.179	-90.545	187.1	4.0	4	7	SUBDUCCION
808*	2013-08-01 21:59	13.469	-90.574	26.8	3.6	3	5	SUBDUCCION
809*	2013-08-02 00:12	13.270	-91.877	15.3	4.1	4	6	G1
810*	2013-08-02 03:02	14.406	-90.156	0.0	3.0	3	5	G5
811*	2013-08-02 03:29	17.354	-95.374	25.4	5.3	5	8	DISTANTE
812*	2013-08-02 20:24	15.485	-90.792	52.7	3.6	5	6	G6
813*	2013-08-02 21:53	14.803	-92.821	20.8	4.2	5	6	REGIONAL
814*	2013-08-03 13:52	14.101	-92.345	28.7	3.8	3	4	SUBDUCCION
815*	2013-08-03 16:18	13.276	-89.711	50.0	4.5	6	6	REGIONAL
816*	2013-08-04 08:47	14.673	-90.594	5.9	3.4	4	5	G5
817*	2013-08-04 09:43	13.180	-89.371	61.1	4.4	5	7	REGIONAL
818	2013-08-04 14:08	14.217	-90.335	179.1	3.7	4	6	SUBDUCCION
819	2013-08-05 04:15	14.611	-92.149	40.9	3.6	3	4	SUBDUCCION
820	2013-08-05 10:49	14.314	-91.523	55.1	3.6	4	6	SUBDUCCION
821*	2013-08-05 17:13	13.548	-90.585	41.4	3.6	4	8	SUBDUCCION
822*	2013-08-05 23:57	14.148	-91.544	25.6	5.2	5	6	SUBDUCCION
823*	2013-08-06 00:54	11.994	-88.687	0.0	4.6	5	8	DISTANTE
824	2013-08-06 03:05	15.121	-89.954	28.6	3.4	4	8	G6
825	2013-08-06 10:28	13.821	-91.919	3.5	4.2	5	8	G1
826*	2013-08-06 14:06	14.471	-91.527	78.8	3.3	3	6	SUBDUCCION
827*	2013-08-07 02:15	14.584	-93.049	16.0	4.1	3	6	REGIONAL
828*	2013-08-07 05:27	14.642	-92.823	202.8	4.1	3	6	REGIONAL
829*	2013-08-07 11:20	13.453	-90.809	0.1	4.3	5	5	G1
830*	2013-08-07 15:31	11.064	-87.436	32.8	4.4	4	7	DISTANTE
831*	2013-08-07 20:52	13.890	-91.225	55.0	3.1	4	8	SUBDUCCION
832*	2013-08-08 02:31	13.137	-90.000	0.1	3.9	5	5	G1

Continua en la siguiente página...

Cuadro 4: ...continuación

No.	Tiempo de origen	Lat	Lon	Prof	M	NST	NF	ZS
833*	2013-08-08 13:25	13.940	-91.412	50.0	3.7	3	4	SUBDUCCION
834*	2013-08-08 17:11	13.377	-89.272	28.5	3.9	3	6	REGIONAL
835*	2013-08-08 21:27	13.746	-91.161	68.9	3.4	3	5	SUBDUCCION
836	2013-08-09 00:20	14.415	-90.701	6.6	2.9	4	4	G4
837	2013-08-09 00:22	14.427	-90.695	6.7	3.2	4	4	G4
838	2013-08-09 02:25	15.596	-92.275	231.7	4.4	6	7	REGIONAL
839*	2013-08-09 07:25	12.447	-88.963	21.8	4.7	6	6	REGIONAL
840*	2013-08-09 14:57	13.817	-91.890	74.0	4.5	7	7	SUBDUCCION
841	2013-08-09 15:05	13.528	-90.425	25.0	3.7	5	9	SUBDUCCION
842*	2013-08-09 15:59	15.016	-92.345	79.6	3.7	3	6	SUBDUCCION
843	2013-08-09 22:51	14.264	-92.039	25.1	3.6	4	5	SUBDUCCION
844*	2013-08-10 05:40	14.077	-91.453	13.3	3.2	3	6	G2
845	2013-08-10 05:45	13.580	-90.679	25.6	3.5	5	9	SUBDUCCION
846	2013-08-10 08:29	14.068	-91.887	25.4	3.8	4	7	SUBDUCCION
847*	2013-08-10 14:53	14.164	-93.104	1.2	4.3	4	5	REGIONAL
848*	2013-08-10 15:20	13.418	-90.730	21.8	4.0	6	6	G1
849*	2013-08-10 23:12	13.882	-91.809	68.5	4.4	7	7	SUBDUCCION
850*	2013-08-11 02:15	14.017	-91.508	77.6	3.9	6	7	SUBDUCCION
851*	2013-08-11 10:19	13.715	-94.921	0.0	4.4	4	4	DISTANTE
852*	2013-08-11 12:03	15.137	-92.121	171.9	4.0	4	6	SUBDUCCION
853	2013-08-11 12:30	14.660	-92.206	65.8	4.1	4	6	SUBDUCCION
854*	2013-08-11 13:26	15.293	-91.815	50.0	3.4	3	6	SUBDUCCION
855*	2013-08-11 19:18	15.620	-92.326	50.0	3.7	3	5	REGIONAL
856*	2013-08-11 21:41	15.255	-92.918	22.0	4.0	3	6	REGIONAL
857*	2013-08-11 23:19	9.884	-87.630	50.0	4.9	6	10	DISTANTE
858	2013-08-11 23:37	15.082	-91.083	43.7	3.3	4	7	SUBDUCCION
859	2013-08-12 07:52	14.136	-91.424	50.0	3.6	5	9	SUBDUCCION
860	2013-08-12 10:49	13.972	-91.647	30.9	3.5	4	6	SUBDUCCION
861*	2013-08-12 10:50	14.774	-90.606	85.5	3.0	3	5	SUBDUCCION
862*	2013-08-12 12:17	12.667	-90.300	0.0	4.2	6	8	G1
863*	2013-08-12 15:02	13.780	-91.093	36.0	3.1	4	7	SUBDUCCION
864*	2013-08-12 15:34	13.649	-93.124	7.0	5.1	7	7	G1
865*	2013-08-12 15:41	14.183	-93.632	35.1	4.2	3	6	REGIONAL
866*	2013-08-12 20:13	12.088	-89.125	33.5	4.3	6	8	REGIONAL
867*	2013-08-12 20:51	11.216	-86.957	24.0	4.4	3	5	DISTANTE
868*	2013-08-13 00:16	15.524	-92.603	140.2	4.0	3	5	REGIONAL
869*	2013-08-13 00:44	12.364	-89.211	50.0	4.3	4	6	REGIONAL
870*	2013-08-13 03:17	15.061	-89.262	0.0	3.6	4	7	G6
871*	2013-08-13 04:18	13.423	-92.393	21.1	4.3	5	5	G1
872	2013-08-13 05:07	14.613	-90.788	6.3	3.0	4	7	G4
873	2013-08-13 06:07	14.658	-90.781	0.9	2.7	4	6	G5
874	2013-08-13 06:10	14.559	-90.803	9.0	3.3	5	8	G4
875	2013-08-13 06:35	14.585	-90.784	6.6	3.0	4	6	G4
876*	2013-08-13 09:04	15.929	-92.519	102.3	4.1	3	6	REGIONAL
877*	2013-08-13 13:24	13.384	-89.801	30.3	3.7	3	5	SUBDUCCION
878*	2013-08-13 15:01	15.050	-93.257	27.9	3.9	3	5	REGIONAL

Continua en la siguiente página...

Cuadro 4: ...continuación

No.	Tiempo de origen	Lat	Lon	Prof	M	NST	NF	ZS
879*	2013-08-13 17:30	15.376	-93.621	29.3	4.1	4	6	REGIONAL
880*	2013-08-13 17:39	15.693	-92.545	19.1	3.9	3	4	REGIONAL
881*	2013-08-13 22:29	15.283	-92.726	158.8	4.0	3	6	REGIONAL
882	2013-08-14 01:58	14.404	-90.967	50.5	4.5	5	5	SUBDUCCION
883*	2013-08-14 04:30	13.467	-91.890	21.1	4.0	4	5	G1
884*	2013-08-14 05:08	14.941	-93.237	30.2	3.8	3	6	REGIONAL
885*	2013-08-14 10:07	15.107	-92.791	191.6	4.2	5	8	REGIONAL
886*	2013-08-14 10:11	13.391	-93.163	33.9	4.4	4	7	REGIONAL
887*	2013-08-14 22:15	13.667	-90.791	50.0	4.1	5	6	SUBDUCCION
888*	2013-08-15 02:01	14.609	-91.519	83.7	3.5	4	8	SUBDUCCION
889*	2013-08-15 14:59	15.735	-90.584	0.0	3.9	3	5	G6
890*	2013-08-15 18:56	13.354	-92.161	103.6	4.9	7	9	SUBDUCCION
891*	2013-08-15 21:14	15.526	-90.733	13.4	4.1	4	7	G6
892*	2013-08-15 23:23	13.672	-91.911	58.5	4.0	6	7	SUBDUCCION
893	2013-08-16 03:01	13.382	-90.133	24.3	4.3	5	7	G2
894*	2013-08-16 04:12	13.849	-91.511	148.5	4.1	6	8	SUBDUCCION
895	2013-08-16 04:51	14.593	-90.527	10.0	3.1	4	6	G5
896*	2013-08-16 14:38	13.499	-87.670	18.4	4.1	6	10	REGIONAL
897*	2013-08-17 06:43	13.759	-90.995	50.0	3.1	4	7	SUBDUCCION
898	2013-08-17 14:42	14.308	-90.325	3.7	3.5	4	5	G4
899*	2013-08-17 17:45	13.054	-87.813	192.0	4.7	6	11	REGIONAL
900	2013-08-17 19:55	13.960	-91.444	50.0	4.0	5	6	SUBDUCCION
901	2013-08-17 21:33	13.425	-89.402	14.9	4.2	6	7	REGIONAL
902*	2013-08-18 00:46	14.110	-91.389	48.9	3.0	3	6	SUBDUCCION
903*	2013-08-18 01:56	14.055	-91.479	72.5	4.0	6	7	SUBDUCCION
904*	2013-08-18 03:56	14.124	-91.422	59.7	3.3	4	7	SUBDUCCION
905	2013-08-18 04:00	13.432	-89.540	17.0	4.0	5	6	REGIONAL
906*	2013-08-18 07:52	14.035	-91.343	52.7	3.3	4	6	SUBDUCCION
907*	2013-08-18 19:56	14.252	-92.346	69.6	4.0	6	7	SUBDUCCION
908*	2013-08-18 22:58	13.208	-89.983	17.3	4.0	3	4	G2
909*	2013-08-19 04:02	16.242	-94.161	50.0	4.8	7	7	DISTANTE
910	2013-08-19 05:15	13.985	-91.449	26.3	3.7	5	7	SUBDUCCION
911*	2013-08-19 15:33	14.222	-92.392	136.0	4.3	7	11	SUBDUCCION
912*	2013-08-19 23:33	13.261	-91.962	4.5	4.1	5	10	G1
913*	2013-08-19 23:45	13.772	-91.808	104.7	4.1	3	6	SUBDUCCION
914*	2013-08-19 23:48	14.446	-91.354	68.4	3.0	3	6	SUBDUCCION
915*	2013-08-20 02:29	14.555	-91.097	104.0	3.5	3	6	SUBDUCCION
916*	2013-08-20 05:17	14.611	-91.639	75.1	3.6	3	6	SUBDUCCION
917*	2013-08-20 07:27	14.454	-90.345	50.0	2.6	3	6	SUBDUCCION
918	2013-08-20 09:35	13.842	-91.244	49.6	3.0	3	6	SUBDUCCION
919*	2013-08-20 19:57	13.987	-91.474	99.8	3.3	3	6	SUBDUCCION
920*	2013-08-20 21:55	13.649	-92.055	82.0	4.0	4	6	SUBDUCCION
921*	2013-08-20 23:12	15.136	-91.541	166.1	3.9	3	4	SUBDUCCION
922*	2013-08-21 01:08	15.432	-93.487	33.4	4.3	3	6	REGIONAL
923*	2013-08-21 07:43	14.934	-90.888	156.0	4.0	6	6	SUBDUCCION
924*	2013-08-21 09:10	15.037	-92.879	134.8	4.1	3	5	REGIONAL

Continua en la siguiente página...

Cuadro 4: ...continuación

No.	Tiempo de origen	Lat	Lon	Prof	M	NST	NF	ZS
925*	2013-08-21 10:24	13.742	-91.489	50.0	3.6	4	6	SUBDUCCION
926	2013-08-21 11:53	13.792	-91.398	38.5	3.8	5	5	SUBDUCCION
927	2013-08-21 11:56	13.612	-90.882	29.8	4.0	6	7	SUBDUCCION
928*	2013-08-21 12:11	14.453	-91.555	75.3	3.4	3	5	SUBDUCCION
929	2013-08-21 14:59	14.474	-91.742	132.9	4.1	4	5	SUBDUCCION
930*	2013-08-21 15:46	16.412	-92.223	173.3	4.2	3	6	REGIONAL
931*	2013-08-21 16:06	13.193	-88.988	31.7	4.1	3	4	REGIONAL
932*	2013-08-21 17:59	14.267	-92.455	51.7	3.7	3	6	SUBDUCCION
933	2013-08-21 18:05	13.567	-91.060	26.3	3.6	4	6	SUBDUCCION
934*	2013-08-21 18:23	13.374	-90.341	0.0	3.9	3	4	G2
935*	2013-08-21 21:55	13.838	-90.984	55.8	3.5	4	6	SUBDUCCION
936*	2013-08-21 22:48	13.459	-90.387	50.0	3.6	4	6	SUBDUCCION
937*	2013-08-21 22:48	13.540	-90.332	63.6	3.6	3	5	SUBDUCCION
938*	2013-08-21 22:54	15.022	-90.394	249.3	3.6	3	4	SUBDUCCION
939*	2013-08-21 23:28	14.582	-93.288	134.4	4.5	5	6	REGIONAL
940*	2013-08-22 00:28	13.444	-92.045	12.7	3.5	3	4	G1
941*	2013-08-22 01:39	14.405	-92.431	34.6	3.9	3	4	SUBDUCCION
942*	2013-08-22 01:58	14.363	-92.643	34.5	3.9	3	4	SUBDUCCION
943*	2013-08-22 02:49	12.825	-91.122	16.6	3.7	4	4	G1
944*	2013-08-22 04:12	13.939	-91.463	80.3	3.9	6	7	SUBDUCCION
945	2013-08-22 06:18	15.014	-91.059	57.8	3.3	3	5	SUBDUCCION
946*	2013-08-23 00:54	14.310	-91.577	82.1	3.1	3	4	SUBDUCCION
947*	2013-08-23 07:43	15.249	-92.036	49.7	3.8	4	6	SUBDUCCION
948*	2013-08-23 08:38	13.625	-90.681	48.0	3.2	3	6	SUBDUCCION
949	2013-08-23 09:54	13.666	-91.044	30.1	3.6	5	7	SUBDUCCION
950	2013-08-23 15:20	13.360	-91.003	25.6	3.7	4	7	SUBDUCCION
951*	2013-08-23 18:02	14.837	-91.320	79.1	3.3	3	5	SUBDUCCION
952*	2013-08-23 18:44	15.392	-91.791	34.6	3.5	3	4	SUBDUCCION
953*	2013-08-23 21:46	13.940	-91.425	43.3	3.4	3	6	SUBDUCCION
954*	2013-08-24 01:12	16.184	-94.683	17.6	5.0	5	7	DISTANTE
955*	2013-08-24 02:59	13.890	-91.487	13.2	3.4	3	6	G1
956*	2013-08-24 12:58	15.649	-86.402	32.9	4.9	6	6	DISTANTE
957*	2013-08-24 17:44	15.367	-91.796	33.3	3.2	3	4	SUBDUCCION
958*	2013-08-24 18:40	13.577	-89.281	28.6	3.5	3	5	REGIONAL
959*	2013-08-24 21:08	13.201	-93.471	273.2	4.8	5	5	REGIONAL
960*	2013-08-25 02:16	15.836	-87.519	5.7	4.5	3	4	REGIONAL
961	2013-08-25 12:10	14.443	-90.316	1.0	2.7	3	4	G5
962*	2013-08-25 12:41	14.439	-90.300	3.6	3.0	3	4	G5
963*	2013-08-25 21:46	15.252	-91.772	35.1	3.6	3	5	SUBDUCCION
964*	2013-08-25 22:59	13.799	-92.419	50.0	4.1	5	7	SUBDUCCION
965	2013-08-26 00:08	13.286	-90.047	17.2	3.8	4	5	G2
966*	2013-08-26 00:20	15.422	-91.958	145.4	3.9	3	4	SUBDUCCION
967	2013-08-26 01:53	14.216	-92.137	99.9	4.0	4	6	SUBDUCCION
968	2013-08-26 08:09	14.304	-91.906	26.7	3.6	3	5	SUBDUCCION
969*	2013-08-26 08:11	13.642	-92.483	35.4	3.9	3	4	SUBDUCCION
970*	2013-08-26 15:20	14.072	-91.500	76.9	3.7	3	6	SUBDUCCION

Continua en la siguiente página...

Cuadro 4: ...continuación

No.	Tiempo de origen	Lat	Lon	Prof	M	NST	NF	ZS
971*	2013-08-26 20:37	13.537	-91.345	0.1	4.3	7	7	G1
972*	2013-08-27 02:17	14.321	-92.517	0.0	4.3	4	5	G1
973*	2013-08-28 04:14	15.564	-92.027	8.2	3.6	3	6	G6
974*	2013-08-28 13:14	15.117	-92.649	100.3	4.1	3	6	REGIONAL
975	2013-08-28 15:49	13.292	-91.046	23.2	4.1	4	7	G1
976	2013-08-28 21:42	13.646	-90.918	29.7	3.4	4	7	SUBDUCCION
977	2013-08-29 03:02	13.445	-90.165	25.7	3.6	3	5	SUBDUCCION
978*	2013-08-29 07:50	13.025	-89.802	0.1	4.1	4	7	REGIONAL
979	2013-08-29 08:04	15.526	-90.794	13.2	3.9	5	7	G6
980*	2013-08-29 10:01	15.773	-88.682	0.0	3.6	3	4	G6
981*	2013-08-29 11:46	14.547	-92.452	176.1	4.0	4	5	SUBDUCCION
982*	2013-08-29 12:29	13.518	-91.387	12.8	3.5	5	7	G1
983	2013-08-29 13:47	13.951	-90.964	72.9	3.5	5	6	SUBDUCCION
984*	2013-08-29 15:32	16.244	-92.613	50.0	3.9	3	5	REGIONAL
985*	2013-08-29 15:42	15.725	-91.423	50.0	3.7	3	4	SUBDUCCION
986*	2013-08-29 22:25	15.375	-93.188	27.0	4.2	3	6	REGIONAL
987*	2013-08-30 03:57	14.486	-90.166	0.1	3.6	6	6	G5
988*	2013-08-31 17:30	14.532	-93.610	34.7	4.5	6	8	REGIONAL
989	2013-09-01 03:18	13.670	-91.631	13.4	3.8	4	5	G1
990	2013-09-01 03:20	14.445	-90.746	5.2	3.1	4	6	G4
991	2013-09-01 14:53	13.238	-90.655	6.5	4.3	5	6	G1
992*	2013-09-01 18:46	13.795	-91.947	28.1	4.0	4	5	SUBDUCCION
993*	2013-09-01 21:12	12.644	-89.387	0.2	4.1	4	6	REGIONAL
994*	2013-09-02 03:56	13.243	-89.606	0.4	4.2	4	6	REGIONAL
995*	2013-09-02 06:21	13.626	-92.246	35.5	3.7	3	6	SUBDUCCION
996*	2013-09-02 11:55	13.982	-91.367	40.9	4.2	6	7	SUBDUCCION
997*	2013-09-02 12:23	14.545	-91.501	122.5	3.5	3	4	SUBDUCCION
998	2013-09-03 00:22	14.506	-90.242	1.1	2.8	3	4	G5
999	2013-09-03 03:01	13.652	-90.986	29.7	3.8	4	5	SUBDUCCION
1000*	2013-09-03 09:09	14.286	-91.519	0.0	3.8	4	4	G2
1001*	2013-09-04 03:21	15.540	-91.978	91.6	4.0	3	6	SUBDUCCION
1002	2013-09-04 05:46	14.525	-90.518	5.2	2.5	3	5	G5
1003*	2013-09-04 06:23	15.299	-91.996	155.6	4.0	3	5	SUBDUCCION
1004*	2013-09-04 07:39	13.594	-90.762	50.0	3.6	3	5	SUBDUCCION
1005*	2013-09-04 13:15	13.786	-91.697	42.2	3.7	5	9	SUBDUCCION
1006*	2013-09-04 23:13	13.140	-90.715	50.0	3.8	3	5	SUBDUCCION
1007*	2013-09-05 06:29	10.149	-86.709	121.6	5.4	6	10	DISTANTE
1008	2013-09-05 13:59	14.011	-91.765	14.9	3.3	3	5	G1
1009	2013-09-06 08:19	13.338	-90.101	22.1	3.7	5	8	G2
1010*	2013-09-06 09:19	14.507	-92.665	25.8	4.1	4	7	SUBDUCCION
1011*	2013-09-06 18:13	14.599	-92.249	64.1	6.5	8	8	SUBDUCCION
1012*	2013-09-06 18:20	14.329	-91.915	68.7	5.1	7	7	SUBDUCCION
1013*	2013-09-06 18:33	13.806	-92.070	55.9	4.1	8	14	SUBDUCCION
1014*	2013-09-06 18:50	13.843	-92.277	21.9	3.9	5	9	G1
1015*	2013-09-06 18:51	13.752	-92.301	23.1	4.0	7	13	G1
1016*	2013-09-06 19:07	14.095	-92.315	169.6	4.7	7	11	SUBDUCCION

Continua en la siguiente página...

Cuadro 4: ...continuación

No.	Tiempo de origen	Lat	Lon	Prof	M	NST	NF	ZS
1017*	2013-09-06 19:11	13.867	-91.940	0.0	3.8	7	14	G1
1018*	2013-09-06 19:14	15.588	-93.060	256.1	4.4	4	6	REGIONAL
1019	2013-09-06 20:04	14.641	-91.968	59.1	4.0	6	7	SUBDUCCION
1020	2013-09-06 20:21	14.712	-92.167	69.8	4.1	5	6	SUBDUCCION
1021*	2013-09-06 20:29	14.761	-92.060	70.7	3.8	3	5	SUBDUCCION
1022*	2013-09-06 20:59	14.672	-91.842	53.6	3.9	4	6	SUBDUCCION
1023*	2013-09-06 21:05	14.551	-92.099	53.5	3.6	3	6	SUBDUCCION
1024*	2013-09-06 21:08	14.351	-91.722	34.0	3.6	3	4	SUBDUCCION
1025*	2013-09-06 21:12	14.525	-92.024	53.4	3.8	3	5	SUBDUCCION
1026*	2013-09-06 21:18	14.464	-91.741	61.9	3.8	3	4	SUBDUCCION
1027*	2013-09-06 21:22	14.660	-91.891	64.2	3.5	3	6	SUBDUCCION
1028	2013-09-06 21:30	14.580	-91.872	60.8	3.4	4	6	SUBDUCCION
1029	2013-09-06 21:47	14.340	-91.656	31.7	3.8	3	5	SUBDUCCION
1030*	2013-09-06 21:51	14.886	-91.417	38.1	3.7	3	5	SUBDUCCION
1031*	2013-09-06 21:53	15.438	-91.874	50.0	3.9	3	5	SUBDUCCION
1032*	2013-09-06 22:29	14.285	-91.806	38.3	3.2	3	5	SUBDUCCION
1033*	2013-09-06 22:50	14.445	-91.766	62.8	4.4	4	4	SUBDUCCION
1034	2013-09-06 23:03	14.510	-91.858	58.7	3.2	4	6	SUBDUCCION
1035*	2013-09-06 23:06	14.815	-92.273	69.3	4.1	5	6	SUBDUCCION
1036*	2013-09-06 23:10	14.371	-91.812	56.1	3.2	3	5	SUBDUCCION
1037*	2013-09-06 23:16	14.798	-91.829	57.4	3.6	3	5	SUBDUCCION
1038*	2013-09-06 23:30	14.496	-92.093	63.4	4.4	8	8	SUBDUCCION
1039	2013-09-06 23:38	14.406	-91.759	65.1	3.8	5	6	SUBDUCCION
1040	2013-09-06 23:39	14.818	-92.119	70.6	4.0	5	8	SUBDUCCION
1041*	2013-09-06 23:48	14.670	-91.662	73.6	3.6	3	4	SUBDUCCION
1042	2013-09-07 00:35	13.351	-90.109	22.5	3.6	5	8	G2
1043	2013-09-07 01:26	14.291	-91.749	29.9	3.3	3	6	SUBDUCCION
1044*	2013-09-07 01:45	14.540	-91.825	68.1	3.5	3	6	SUBDUCCION
1045*	2013-09-07 02:15	13.786	-92.188	0.0	3.9	5	5	G1
1046*	2013-09-07 02:21	14.308	-91.864	66.5	4.5	8	8	SUBDUCCION
1047	2013-09-07 02:24	13.938	-91.720	13.6	3.9	5	8	G1
1048	2013-09-07 02:45	14.218	-92.008	22.9	3.6	3	6	G2
1049*	2013-09-07 02:47	14.702	-91.636	67.4	3.3	3	6	SUBDUCCION
1050*	2013-09-07 02:51	14.236	-91.842	31.5	3.4	3	5	SUBDUCCION
1051	2013-09-07 03:49	14.431	-91.907	74.0	3.9	4	5	SUBDUCCION
1052*	2013-09-07 04:00	14.472	-92.060	59.1	3.5	3	5	SUBDUCCION
1053*	2013-09-07 04:04	14.277	-91.809	39.4	3.6	3	4	SUBDUCCION
1054*	2013-09-07 04:25	14.250	-91.849	57.2	4.1	6	8	SUBDUCCION
1055*	2013-09-07 04:29	13.337	-89.984	0.0	3.5	3	6	G2
1056	2013-09-07 05:07	14.235	-91.923	55.5	3.9	7	10	SUBDUCCION
1057*	2013-09-07 05:23	14.314	-91.860	63.6	4.2	8	9	SUBDUCCION
1058	2013-09-07 05:44	14.197	-91.857	30.9	3.5	3	5	SUBDUCCION
1059*	2013-09-07 05:51	14.342	-91.781	51.0	3.7	7	8	SUBDUCCION
1060*	2013-09-07 05:57	14.347	-92.017	30.1	3.6	3	5	SUBDUCCION
1061	2013-09-07 05:59	14.293	-91.675	31.3	3.5	3	5	SUBDUCCION
1062*	2013-09-07 06:10	15.219	-91.758	46.6	3.6	3	6	SUBDUCCION

Continua en la siguiente página...

Cuadro 4: ...continuación

No.	Tiempo de origen	Lat	Lon	Prof	M	NST	NF	ZS
1063*	2013-09-07 06:22	14.234	-91.805	28.8	3.1	3	6	SUBDUCCION
1064*	2013-09-07 07:01	14.336	-91.722	47.7	3.8	3	5	SUBDUCCION
1065*	2013-09-07 07:21	15.173	-91.961	63.8	3.9	3	6	SUBDUCCION
1066	2013-09-07 07:24	14.560	-91.727	53.9	3.7	4	6	SUBDUCCION
1067*	2013-09-07 07:27	13.692	-92.351	30.4	4.0	7	10	SUBDUCCION
1068*	2013-09-07 07:52	14.575	-91.965	42.5	3.7	3	5	SUBDUCCION
1069*	2013-09-07 08:31	14.315	-91.776	42.4	3.6	3	5	SUBDUCCION
1070*	2013-09-07 08:33	14.303	-91.783	50.0	3.5	3	5	SUBDUCCION
1071	2013-09-07 09:04	14.426	-91.736	60.3	3.8	5	7	SUBDUCCION
1072*	2013-09-07 10:16	14.197	-91.729	29.9	3.4	3	5	SUBDUCCION
1073*	2013-09-07 10:19	14.437	-92.090	31.4	3.5	3	6	SUBDUCCION
1074*	2013-09-07 11:34	14.432	-91.731	63.2	3.7	3	5	SUBDUCCION
1075*	2013-09-07 11:38	14.258	-91.746	30.4	3.3	3	5	SUBDUCCION
1076	2013-09-07 11:57	14.220	-91.783	29.0	3.4	3	6	SUBDUCCION
1077	2013-09-07 12:38	14.705	-92.055	64.2	4.0	5	8	SUBDUCCION
1078*	2013-09-07 12:59	14.382	-90.632	4.8	2.8	3	5	G4
1079*	2013-09-07 13:17	14.331	-91.844	61.9	3.7	7	8	SUBDUCCION
1080	2013-09-07 13:47	14.454	-90.569	0.0	3.3	6	8	G4
1081	2013-09-07 13:52	14.469	-90.576	5.3	2.8	4	5	G4
1082	2013-09-07 13:54	14.489	-90.562	6.2	2.6	4	5	G4
1083*	2013-09-07 13:54	14.478	-90.573	9.7	2.9	3	4	G4
1084*	2013-09-07 14:17	14.470	-90.575	7.0	3.1	3	4	G4
1085*	2013-09-07 14:29	14.298	-91.824	53.5	3.5	4	6	SUBDUCCION
1086	2013-09-07 14:33	14.574	-91.915	66.5	3.8	5	6	SUBDUCCION
1087	2013-09-07 14:46	14.455	-90.580	0.5	3.6	6	6	G4
1088*	2013-09-07 15:01	14.484	-90.564	6.5	2.4	3	4	G4
1089*	2013-09-07 16:19	14.482	-90.696	6.0	2.9	3	6	G4
1090*	2013-09-07 16:29	14.325	-91.991	34.4	3.7	3	4	SUBDUCCION
1091	2013-09-07 18:27	14.309	-91.841	60.3	3.8	7	10	SUBDUCCION
1092	2013-09-07 19:23	13.292	-90.022	17.6	3.3	3	4	G2
1093*	2013-09-07 20:44	14.987	-91.964	61.2	3.5	3	5	SUBDUCCION
1094*	2013-09-07 22:06	15.085	-92.040	64.2	3.5	3	5	SUBDUCCION
1095	2013-09-08 00:08	14.424	-91.784	50.0	3.7	7	10	SUBDUCCION
1096*	2013-09-08 00:47	14.393	-90.543	169.1	3.8	8	9	SUBDUCCION
1097	2013-09-08 03:41	14.267	-92.037	23.5	3.5	3	5	G2
1098	2013-09-08 03:48	13.628	-90.283	50.0	3.5	5	8	SUBDUCCION
1099	2013-09-08 03:54	14.580	-91.902	60.2	3.6	4	7	SUBDUCCION
1100*	2013-09-08 04:23	14.548	-91.893	57.4	3.7	7	8	SUBDUCCION
1101	2013-09-08 04:57	14.104	-90.779	112.5	3.6	6	10	SUBDUCCION
1102	2013-09-08 05:25	14.214	-91.979	24.6	3.5	3	5	G2
1103	2013-09-08 06:55	14.168	-90.061	54.4	3.5	5	9	SUBDUCCION
1104*	2013-09-08 08:50	15.120	-91.949	118.4	3.7	3	6	SUBDUCCION
1105*	2013-09-08 09:50	14.033	-92.291	76.1	4.0	7	13	SUBDUCCION
1106	2013-09-08 10:03	15.337	-91.568	19.2	3.7	3	6	G6
1107*	2013-09-08 10:43	15.289	-91.364	78.8	3.5	3	6	SUBDUCCION
1108	2013-09-08 11:21	14.012	-91.748	14.9	3.8	5	10	G1

Continua en la siguiente página...

Cuadro 4: ...continuación

No.	Tiempo de origen	Lat	Lon	Prof	M	NST	NF	ZS
1109*	2013-09-08 14:00	14.239	-92.323	63.7	4.0	6	10	SUBDUCCION
1110*	2013-09-08 15:09	14.105	-92.309	0.8	4.1	5	10	G1
1111*	2013-09-08 17:01	14.982	-91.531	87.1	3.6	4	8	SUBDUCCION
1112*	2013-09-08 18:40	13.509	-90.059	28.0	5.1	8	8	SUBDUCCION
1113	2013-09-08 19:02	13.302	-90.121	11.6	3.5	5	10	G2
1114	2013-09-08 22:27	14.258	-91.980	24.9	3.7	3	6	G2
1115*	2013-09-09 00:54	14.680	-91.693	75.0	3.5	3	6	SUBDUCCION
1116*	2013-09-09 02:18	14.452	-91.695	72.5	3.5	4	8	SUBDUCCION
1117	2013-09-09 02:34	14.816	-92.043	90.2	3.7	5	10	SUBDUCCION
1118*	2013-09-09 03:15	14.920	-92.462	123.8	4.5	8	13	SUBDUCCION
1119	2013-09-09 03:41	14.435	-91.880	66.6	3.5	4	7	SUBDUCCION
1120*	2013-09-09 03:57	12.498	-89.007	50.0	4.4	6	8	REGIONAL
1121*	2013-09-09 05:03	13.940	-92.121	39.7	3.7	5	9	SUBDUCCION
1122*	2013-09-09 07:46	14.241	-91.996	23.9	3.6	3	6	G2
1123*	2013-09-09 10:00	14.957	-91.809	70.1	3.4	3	6	SUBDUCCION
1124*	2013-09-09 10:22	15.244	-91.726	53.4	3.6	3	6	SUBDUCCION
1125*	2013-09-09 10:35	15.208	-91.749	54.2	3.1	3	5	SUBDUCCION
1126	2013-09-09 12:33	14.672	-92.179	76.1	3.9	6	8	SUBDUCCION
1127*	2013-09-09 14:16	14.693	-91.608	67.6	3.6	4	6	SUBDUCCION
1128	2013-09-09 18:50	14.362	-91.724	50.0	4.2	7	8	SUBDUCCION
1129*	2013-09-09 19:16	14.601	-91.990	74.5	3.8	5	7	SUBDUCCION
1130*	2013-09-09 19:31	14.579	-92.013	64.8	3.6	3	6	SUBDUCCION
1131	2013-09-09 20:49	14.384	-91.816	58.0	3.4	3	5	SUBDUCCION
1132*	2013-09-09 21:06	11.993	-89.114	31.7	4.1	3	5	DISTANTE
1133*	2013-09-09 21:57	14.364	-90.643	1.0	2.8	3	5	G4
1134	2013-09-09 22:00	14.391	-90.576	6.1	2.6	3	5	G4
1135	2013-09-09 22:01	13.810	-91.080	30.8	3.3	5	10	SUBDUCCION
1136*	2013-09-09 22:39	14.476	-92.018	50.0	3.4	3	6	SUBDUCCION
1137	2013-09-10 06:44	14.620	-92.122	57.8	4.6	8	9	SUBDUCCION
1138*	2013-09-10 09:46	13.265	-92.531	36.0	3.5	3	5	SUBDUCCION
1139*	2013-09-10 10:53	14.677	-92.194	75.8	3.6	3	4	SUBDUCCION
1140	2013-09-10 12:15	14.331	-91.690	32.1	3.5	3	4	SUBDUCCION
1141*	2013-09-10 12:47	14.545	-91.794	45.2	4.0	4	4	SUBDUCCION
1142	2013-09-10 13:53	13.941	-91.710	9.4	3.8	5	7	G1
1143*	2013-09-10 14:51	14.098	-91.954	30.8	3.7	4	6	SUBDUCCION
1144*	2013-09-10 18:15	14.156	-91.774	44.3	3.1	3	5	SUBDUCCION
1145*	2013-09-10 20:09	14.383	-91.784	64.0	3.3	3	5	SUBDUCCION
1146	2013-09-11 00:07	14.371	-90.202	123.0	3.6	4	5	SUBDUCCION
1147	2013-09-11 01:52	14.449	-91.759	61.1	3.6	5	5	SUBDUCCION
1148*	2013-09-11 03:22	14.253	-91.896	26.9	3.5	3	5	SUBDUCCION
1149*	2013-09-11 03:58	13.999	-91.537	44.4	3.1	3	6	SUBDUCCION
1150*	2013-09-11 04:05	14.495	-91.720	61.9	3.5	3	4	SUBDUCCION
1151*	2013-09-11 04:24	14.755	-91.653	77.9	3.2	3	5	SUBDUCCION
1152*	2013-09-11 05:05	13.626	-89.643	66.7	3.4	4	5	SUBDUCCION
1153*	2013-09-11 09:55	14.783	-93.774	31.2	4.3	5	7	REGIONAL
1154*	2013-09-11 10:04	14.031	-91.835	50.0	3.8	7	10	SUBDUCCION

Continua en la siguiente página...

Cuadro 4: ...continuación

No.	Tiempo de origen	Lat	Lon	Prof	M	NST	NF	ZS
1155	2013-09-11 16:35	14.456	-90.570	5.8	2.7	4	4	G4
1156	2013-09-11 16:54	14.476	-90.566	6.0	2.4	4	5	G4
1157	2013-09-11 17:22	13.607	-90.667	32.9	3.8	8	10	SUBDUCCION
1158	2013-09-11 20:53	14.042	-90.141	0.0	3.5	4	5	G4
1159*	2013-09-11 21:50	15.137	-93.399	29.0	4.2	8	11	REGIONAL
1160	2013-09-12 00:12	14.451	-91.837	69.1	3.2	3	4	SUBDUCCION
1161*	2013-09-12 07:03	13.307	-90.493	32.5	4.9	8	8	SUBDUCCION
1162	2013-09-12 07:55	12.994	-90.385	14.0	3.8	4	7	G1
1163	2013-09-12 08:53	13.159	-90.104	16.0	3.6	5	9	G1
1164	2013-09-12 10:27	14.789	-92.016	79.5	3.4	4	8	SUBDUCCION
1165	2013-09-12 10:50	13.229	-90.458	19.3	3.5	5	9	G1
1166*	2013-09-12 12:34	13.891	-90.903	15.2	3.1	3	6	G2
1167*	2013-09-12 13:07	12.817	-90.677	63.8	4.0	8	13	SUBDUCCION
1168*	2013-09-12 16:22	15.017	-91.834	121.7	3.7	5	8	SUBDUCCION
1169	2013-09-12 17:25	14.493	-91.870	64.6	3.5	6	9	SUBDUCCION
1170	2013-09-12 17:45	13.071	-90.513	12.8	3.7	5	9	G1
1171*	2013-09-12 18:10	14.665	-91.649	57.7	3.4	3	5	SUBDUCCION
1172*	2013-09-12 18:55	14.741	-92.169	66.2	3.9	4	7	SUBDUCCION
1173	2013-09-12 21:08	13.194	-90.224	21.3	3.0	4	6	G1
1174	2013-09-12 22:54	13.215	-90.413	19.2	3.6	4	6	G1
1175	2013-09-12 23:07	13.049	-90.556	12.1	3.9	5	8	G1
1176	2013-09-13 00:42	14.353	-92.087	76.6	3.7	7	8	SUBDUCCION
1177*	2013-09-13 01:44	14.661	-91.753	90.7	3.4	3	5	SUBDUCCION
1178	2013-09-13 02:58	14.617	-90.779	6.3	3.0	4	6	G4
1179	2013-09-13 03:13	14.611	-91.642	76.1	3.5	4	6	SUBDUCCION
1180*	2013-09-13 04:21	15.910	-91.450	138.2	3.8	4	6	SUBDUCCION
1181*	2013-09-13 04:35	14.760	-91.806	158.3	3.6	4	6	SUBDUCCION
1182	2013-09-13 04:37	15.579	-91.629	156.0	3.8	5	8	SUBDUCCION
1183*	2013-09-13 14:05	14.843	-91.597	84.6	3.4	4	6	SUBDUCCION
1184*	2013-09-13 17:10	13.765	-93.236	35.3	4.1	3	5	REGIONAL
1185*	2013-09-13 18:14	15.212	-91.974	78.6	3.4	3	6	SUBDUCCION
1186	2013-09-13 19:30	13.298	-90.537	20.1	3.9	6	7	G1
1187*	2013-09-14 17:08	13.963	-91.556	46.6	3.5	4	5	SUBDUCCION
1188*	2013-09-14 19:51	14.318	-91.726	36.5	3.5	3	6	SUBDUCCION
1189*	2013-09-14 22:11	12.961	-88.948	10.2	4.3	4	6	REGIONAL
1190*	2013-09-14 23:57	14.167	-92.007	54.8	3.9	6	8	SUBDUCCION
1191	2013-09-14 23:59	13.559	-90.088	70.1	3.6	5	8	SUBDUCCION
1192*	2013-09-15 03:34	13.873	-90.815	97.8	3.6	3	4	SUBDUCCION
1193	2013-09-15 06:51	14.651	-92.105	58.0	3.9	5	7	SUBDUCCION
1194*	2013-09-15 08:46	14.476	-92.100	47.2	3.7	3	5	SUBDUCCION
1195*	2013-09-15 13:39	11.996	-89.344	0.5	4.1	3	6	DISTANTE
1196*	2013-09-15 20:55	12.732	-89.617	102.0	3.6	4	8	REGIONAL
1197*	2013-09-16 04:46	14.275	-91.860	56.9	3.6	4	7	SUBDUCCION
1198*	2013-09-16 04:51	14.427	-91.952	25.9	3.5	3	6	SUBDUCCION
1199*	2013-09-16 06:14	14.662	-92.148	103.8	3.7	3	6	SUBDUCCION
1200*	2013-09-16 06:41	14.135	-92.165	67.6	3.9	6	12	SUBDUCCION

Continua en la siguiente página...

Cuadro 4: ...continuación

No.	Tiempo de origen	Lat	Lon	Prof	M	NST	NF	ZS
1201*	2013-09-16 16:12	15.325	-91.382	45.3	3.3	3	6	SUBDUCCION
1202*	2013-09-16 16:15	14.342	-91.745	71.5	3.4	3	6	SUBDUCCION
1203	2013-09-17 00:32	14.354	-91.769	55.4	3.6	6	10	SUBDUCCION
1204*	2013-09-17 02:46	14.159	-91.783	28.6	3.3	3	5	SUBDUCCION
1205*	2013-09-17 06:34	14.348	-91.891	40.4	3.4	3	5	SUBDUCCION
1206*	2013-09-17 08:58	14.226	-91.876	129.2	4.1	7	12	SUBDUCCION
1207	2013-09-17 15:13	14.257	-91.926	50.0	3.6	3	5	SUBDUCCION
1208*	2013-09-17 17:16	14.242	-90.708	34.9	2.4	3	5	SUBDUCCION
1209*	2013-09-17 19:58	14.825	-91.972	69.8	4.1	4	7	SUBDUCCION
1210*	2013-09-17 20:24	13.409	-90.103	46.7	3.1	4	7	SUBDUCCION
1211*	2013-09-17 21:20	14.256	-90.670	9.6	3.1	3	4	G4
1212*	2013-09-17 23:32	14.529	-92.257	52.7	3.8	3	5	SUBDUCCION
1213	2013-09-18 03:27	13.384	-90.129	26.4	3.7	4	6	SUBDUCCION
1214	2013-09-18 10:11	13.885	-90.849	88.1	3.7	6	9	SUBDUCCION
1215*	2013-09-18 12:52	13.280	-89.886	50.0	3.6	3	4	SUBDUCCION
1216*	2013-09-18 14:31	14.261	-91.943	25.7	3.5	3	4	SUBDUCCION
1217*	2013-09-18 22:02	13.798	-92.007	28.3	3.6	4	5	SUBDUCCION
1218*	2013-09-18 23:33	17.430	-88.391	0.0	4.1	4	5	G8
1219	2013-09-19 00:04	14.228	-91.725	30.1	3.5	3	4	SUBDUCCION
1220	2013-09-19 00:17	14.623	-91.730	73.4	3.5	3	5	SUBDUCCION
1221*	2013-09-19 02:29	16.815	-88.182	0.0	4.6	6	7	G8
1222*	2013-09-19 03:00	16.873	-87.142	34.6	4.2	5	7	REGIONAL
1223*	2013-09-19 03:35	16.191	-94.854	50.0	4.6	3	5	DISTANTE
1224*	2013-09-19 05:00	13.899	-91.378	50.0	3.0	3	6	SUBDUCCION
1225*	2013-09-19 05:30	15.962	-89.990	32.0	3.5	4	4	G8
1226*	2013-09-19 08:43	14.891	-93.031	25.3	4.3	4	5	REGIONAL
1227	2013-09-19 16:20	14.603	-92.031	63.0	3.7	4	6	SUBDUCCION
1228	2013-09-19 18:43	14.727	-92.099	26.6	3.9	3	6	SUBDUCCION
1229*	2013-09-19 21:10	15.666	-92.694	70.8	4.5	5	7	REGIONAL
1230*	2013-09-20 02:07	13.757	-92.475	35.3	4.3	5	7	SUBDUCCION
1231*	2013-09-20 14:41	13.316	-88.954	124.0	4.0	3	4	REGIONAL
1232*	2013-09-20 16:36	13.762	-92.444	0.0	4.0	3	4	G1
1233*	2013-09-20 19:57	14.933	-90.166	14.8	3.3	4	5	G6
1234*	2013-09-20 21:21	13.448	-90.681	14.0	3.6	3	4	G1
1235*	2013-09-21 03:41	12.347	-88.905	0.0	4.1	3	6	REGIONAL
1236	2013-09-21 06:10	13.268	-90.879	10.0	4.2	5	7	G1
1237	2013-09-21 06:49	13.227	-89.972	14.7	3.5	3	6	G2
1238*	2013-09-21 07:56	13.916	-91.448	32.0	3.4	3	5	SUBDUCCION
1239*	2013-09-21 11:32	14.340	-92.166	41.8	4.4	6	6	SUBDUCCION
1240*	2013-09-21 12:43	14.381	-89.471	35.0	3.8	3	4	SUBDUCCION
1241*	2013-09-21 13:52	14.006	-92.495	1.5	4.0	3	4	G1
1242*	2013-09-21 22:50	14.541	-93.255	0.0	4.1	3	5	REGIONAL
1243*	2013-09-21 23:53	11.898	-87.454	230.8	4.4	4	5	DISTANTE
1244*	2013-09-22 02:35	12.957	-89.792	26.9	4.0	5	5	REGIONAL
1245*	2013-09-22 06:18	14.917	-93.813	29.0	4.2	3	5	REGIONAL
1246*	2013-09-22 07:45	14.390	-91.743	35.1	3.8	3	4	SUBDUCCION

Continua en la siguiente página...

Cuadro 4: ...continuación

No.	Tiempo de origen	Lat	Lon	Prof	M	NST	NF	ZS
1247	2013-09-23 03:35	15.302	-91.142	25.6	3.5	4	6	SUBDUCCION
1248*	2013-09-23 06:44	15.584	-90.638	35.2	3.5	3	4	G6
1249*	2013-09-23 08:02	14.908	-92.263	29.5	3.5	3	5	SUBDUCCION
1250	2013-09-23 09:53	14.099	-91.777	18.3	4.1	4	6	G2
1251*	2013-09-23 15:58	14.683	-92.129	34.8	4.0	4	8	SUBDUCCION
1252	2013-09-24 11:04	14.642	-90.889	45.9	2.8	3	6	SUBDUCCION
1253*	2013-09-24 13:48	16.625	-93.865	144.5	4.5	4	8	REGIONAL
1254*	2013-09-24 14:31	14.291	-91.902	28.8	3.3	3	6	SUBDUCCION
1255	2013-09-24 21:57	13.594	-91.393	23.7	3.4	4	8	G1
1256*	2013-09-24 22:11	16.009	-91.210	35.2	3.4	5	10	G8
1257*	2013-09-24 23:36	12.138	-89.396	204.3	4.0	3	5	REGIONAL
1258*	2013-09-24 23:51	13.627	-91.223	13.7	3.9	4	6	G1
1259*	2013-09-25 03:40	13.144	-89.508	192.2	4.1	5	8	REGIONAL
1260*	2013-09-25 07:14	15.348	-91.866	71.8	4.0	6	11	SUBDUCCION
1261*	2013-09-25 09:10	13.353	-90.429	13.0	3.5	4	7	G1
1262	2013-09-25 10:49	14.256	-89.896	68.5	3.9	5	5	SUBDUCCION
1263	2013-09-25 17:18	13.618	-91.408	11.6	4.2	5	7	G1
1264*	2013-09-25 17:27	16.340	-93.031	46.1	4.2	3	6	REGIONAL
1265*	2013-09-25 23:06	13.415	-90.123	0.3	3.3	3	6	G2
1266*	2013-09-26 00:46	14.078	-93.300	0.0	5.2	6	7	REGIONAL
1267*	2013-09-26 01:57	14.075	-93.782	34.2	4.7	5	7	REGIONAL
1268	2013-09-26 02:06	14.873	-93.461	31.2	4.2	3	6	REGIONAL
1269*	2013-09-26 04:01	15.235	-92.535	26.1	4.1	3	6	REGIONAL
1270*	2013-09-26 04:48	14.312	-93.557	0.0	4.5	5	8	REGIONAL
1271*	2013-09-26 09:16	13.285	-90.023	0.0	3.4	3	5	G2
1272*	2013-09-26 09:31	14.396	-93.100	35.2	4.4	3	4	REGIONAL
1273*	2013-09-26 10:38	16.401	-92.062	255.6	4.3	3	5	REGIONAL
1274*	2013-09-26 11:49	17.532	-91.526	35.1	4.4	3	5	REGIONAL
1275*	2013-09-26 12:16	13.834	-91.623	0.0	3.7	3	6	G1
1276	2013-09-26 17:15	14.526	-90.615	38.3	3.2	3	5	SUBDUCCION
1277	2013-09-26 18:54	14.790	-90.729	41.3	3.1	4	4	SUBDUCCION
1278	2013-09-26 18:55	14.077	-90.737	12.9	3.5	3	4	G2
1279*	2013-09-26 19:24	14.617	-94.079	30.5	4.5	4	5	DISTANTE
1280*	2013-09-26 20:07	14.478	-90.652	6.7	2.7	3	5	G4
1281	2013-09-26 20:57	14.526	-90.656	5.4	3.4	3	4	G4
1282*	2013-09-26 21:25	14.495	-90.648	6.4	3.0	3	5	G4
1283*	2013-09-26 23:40	14.034	-94.009	0.1	5.0	5	7	DISTANTE
1284*	2013-09-27 00:26	14.496	-90.639	6.1	3.4	3	5	G4
1285*	2013-09-27 01:08	14.831	-93.199	197.3	4.3	3	6	REGIONAL
1286*	2013-09-27 01:47	13.111	-92.378	0.2	4.1	4	6	REGIONAL
1287	2013-09-27 02:16	13.646	-90.875	47.7	3.4	4	7	SUBDUCCION
1288	2013-09-27 02:54	14.521	-90.663	6.0	2.5	3	4	G4
1289*	2013-09-27 04:17	13.617	-90.988	13.2	3.7	4	6	G1
1290*	2013-09-27 05:45	14.516	-90.659	6.1	3.3	3	4	G4
1291*	2013-09-27 20:10	12.974	-91.594	36.1	3.9	4	4	SUBDUCCION
1292*	2013-09-27 20:25	14.660	-92.091	24.0	3.9	3	6	G2

Continua en la siguiente página...

Cuadro 4: ...continuación

No.	Tiempo de origen	Lat	Lon	Prof	M	NST	NF	ZS
1293*	2013-09-28 01:05	13.409	-90.119	8.7	3.2	3	6	G2
1294	2013-09-28 03:30	13.100	-89.446	23.9	4.0	4	6	REGIONAL
1295	2013-09-28 10:21	14.235	-92.081	14.5	4.1	4	5	G2
1296*	2013-09-28 12:48	14.133	-92.171	0.0	4.2	4	6	G1
1297*	2013-09-28 15:38	14.905	-91.984	50.0	4.0	3	6	SUBDUCCION
1298*	2013-09-28 22:05	14.545	-93.045	0.0	4.2	3	4	REGIONAL
1299*	2013-09-29 00:09	13.456	-90.080	4.3	3.4	3	6	G2
1300*	2013-09-29 03:43	14.529	-90.686	16.0	3.2	4	5	G4
1301*	2013-09-29 04:17	14.514	-90.617	194.8	3.8	5	7	SUBDUCCION
1302	2013-09-29 04:42	14.230	-90.272	10.5	2.6	4	6	G4
1303*	2013-09-29 21:49	14.918	-92.174	155.6	4.4	4	7	SUBDUCCION
1304	2013-09-29 23:40	14.130	-91.284	74.4	3.5	3	6	SUBDUCCION
1305*	2013-09-30 12:41	14.449	-92.071	48.6	4.4	5	6	SUBDUCCION
1306*	2013-09-30 16:57	13.903	-93.439	14.4	4.6	5	5	REGIONAL
1307*	2013-09-30 17:20	10.060	-87.819	43.4	4.8	3	5	DISTANTE
1308*	2013-09-30 19:51	15.885	-88.548	35.0	3.9	3	5	G6
1309*	2013-10-01 04:28	13.157	-92.277	31.3	4.0	4	6	SUBDUCCION
1310*	2013-10-01 09:09	13.423	-90.627	25.0	3.3	3	6	SUBDUCCION
1311	2013-10-01 12:36	13.772	-91.821	11.4	3.9	4	6	G1
1312	2013-10-01 19:35	14.211	-90.817	30.7	3.9	4	4	SUBDUCCION
1313*	2013-10-01 19:40	13.734	-91.298	0.0	3.7	4	7	G1
1314*	2013-10-02 15:24	16.165	-91.774	35.4	3.9	4	8	G8
1315*	2013-10-02 17:08	11.810	-89.458	0.0	4.1	5	9	DISTANTE
1316*	2013-10-02 19:29	14.060	-91.398	53.2	3.2	3	6	SUBDUCCION
1317*	2013-10-02 19:32	15.024	-91.849	70.3	3.4	3	6	SUBDUCCION
1318*	2013-10-02 21:08	14.984	-91.562	72.7	3.3	3	5	SUBDUCCION
1319*	2013-10-02 23:56	14.201	-92.961	15.2	4.7	5	6	REGIONAL
1320*	2013-10-03 00:53	13.605	-89.620	86.8	3.4	4	8	REGIONAL
1321*	2013-10-03 02:57	16.169	-92.441	131.0	4.2	4	7	REGIONAL
1322*	2013-10-03 06:32	12.098	-88.577	0.0	4.2	6	8	REGIONAL
1323*	2013-10-03 13:58	14.385	-93.535	23.7	5.1	7	8	REGIONAL
1324*	2013-10-03 17:51	14.321	-91.876	50.0	3.2	3	6	SUBDUCCION
1325*	2013-10-03 18:17	13.721	-90.607	65.7	3.2	3	5	SUBDUCCION
1326*	2013-10-03 18:27	13.655	-91.603	35.0	3.2	3	5	SUBDUCCION
1327*	2013-10-04 05:24	13.456	-92.465	25.4	3.9	4	4	SUBDUCCION
1328	2013-10-04 07:41	13.934	-90.037	4.7	2.8	3	6	G4
1329	2013-10-04 07:48	15.274	-92.719	87.6	4.5	5	6	REGIONAL
1330*	2013-10-04 08:10	15.455	-91.601	191.7	3.9	4	6	SUBDUCCION
1331*	2013-10-04 09:19	15.275	-91.738	94.3	3.5	3	5	SUBDUCCION
1332*	2013-10-04 17:11	14.926	-91.635	70.7	3.2	3	5	SUBDUCCION
1333	2013-10-04 19:54	14.651	-92.209	69.9	4.3	6	7	SUBDUCCION
1334*	2013-10-04 21:11	13.770	-91.912	21.7	3.5	3	6	G1
1335*	2013-10-05 02:37	13.539	-91.215	115.4	3.7	6	12	SUBDUCCION
1336*	2013-10-05 04:20	15.194	-90.524	13.3	3.1	6	11	G6
1337*	2013-10-05 10:16	15.972	-93.518	6.1	4.1	3	6	REGIONAL
1338*	2013-10-05 11:58	14.348	-91.374	96.5	3.0	4	8	SUBDUCCION

Continua en la siguiente página...

Cuadro 4: ...continuación

No.	Tiempo de origen	Lat	Lon	Prof	M	NST	NF	ZS
1339*	2013-10-05 13:55	14.006	-91.993	86.0	3.4	5	10	SUBDUCCION
1340*	2013-10-05 15:58	13.733	-93.070	36.3	4.5	7	12	SUBDUCCION
1341*	2013-10-05 20:03	16.655	-91.286	165.9	3.7	5	7	SUBDUCCION
1342*	2013-10-06 00:08	14.575	-90.365	1.1	2.8	3	5	G5
1343	2013-10-06 01:29	14.663	-90.546	30.8	3.0	4	8	SUBDUCCION
1344	2013-10-06 04:37	13.596	-90.559	30.6	3.3	4	7	SUBDUCCION
1345*	2013-10-06 16:02	13.348	-94.134	32.4	4.5	7	14	DISTANTE
1346*	2013-10-06 17:02	15.307	-91.894	50.0	3.4	3	6	SUBDUCCION
1347	2013-10-06 17:11	14.429	-91.616	64.4	3.5	4	8	SUBDUCCION
1348*	2013-10-06 17:55	14.240	-92.777	154.1	3.9	5	10	SUBDUCCION
1349	2013-10-06 21:24	14.616	-89.147	20.3	3.2	4	8	G5
1350*	2013-10-07 05:16	13.259	-92.562	35.5	4.0	7	8	SUBDUCCION
1351	2013-10-07 09:21	15.723	-89.165	0.0	3.8	5	9	G6
1352*	2013-10-07 12:41	15.419	-92.697	165.2	4.2	3	5	REGIONAL
1353*	2013-10-07 13:31	14.217	-92.169	50.0	3.9	3	3	SUBDUCCION
1354	2013-10-07 16:57	13.973	-91.051	66.4	3.5	4	5	SUBDUCCION
1355*	2013-10-07 17:25	13.190	-90.481	17.0	3.8	4	6	G1
1356*	2013-10-07 20:01	12.862	-87.865	24.0	4.2	4	6	REGIONAL
1357*	2013-10-08 05:13	14.220	-92.509	25.3	4.0	5	7	SUBDUCCION
1358*	2013-10-08 18:39	15.245	-93.118	34.2	4.1	5	7	REGIONAL
1359	2013-10-08 20:09	14.511	-92.011	62.1	4.3	7	8	SUBDUCCION
1360*	2013-10-09 01:29	15.001	-92.636	71.0	3.6	3	5	REGIONAL
1361	2013-10-09 05:08	14.948	-91.987	33.2	3.7	4	7	SUBDUCCION
1362*	2013-10-09 20:59	14.083	-89.759	12.9	3.3	3	4	G4
1363	2013-10-10 05:06	13.955	-91.353	25.0	3.4	3	5	SUBDUCCION
1364*	2013-10-10 08:22	14.142	-91.671	31.8	3.4	5	9	SUBDUCCION
1365	2013-10-10 10:10	15.469	-89.877	22.3	3.4	5	9	G6
1366*	2013-10-10 10:46	15.093	-93.054	35.2	3.9	3	6	REGIONAL
1367*	2013-10-10 17:56	15.025	-91.561	97.3	3.2	3	6	SUBDUCCION
1368*	2013-10-10 18:02	13.477	-91.977	35.7	4.1	5	8	SUBDUCCION
1369*	2013-10-10 18:04	13.647	-92.266	131.9	4.4	6	8	SUBDUCCION
1370*	2013-10-10 18:11	15.971	-90.961	25.2	3.9	4	8	G8
1371*	2013-10-10 19:14	14.085	-91.926	147.1	4.0	5	7	SUBDUCCION
1372*	2013-10-10 20:09	13.919	-91.382	50.0	2.9	3	6	SUBDUCCION
1373*	2013-10-10 20:24	15.195	-92.078	107.5	3.5	3	6	SUBDUCCION
1374*	2013-10-10 20:29	14.542	-92.496	103.8	3.8	4	8	SUBDUCCION
1375*	2013-10-11 04:38	15.986	-91.419	40.5	3.7	3	6	G6
1376*	2013-10-11 10:31	14.395	-92.517	0.7	3.9	4	6	G1
1377	2013-10-11 13:15	14.139	-91.414	35.1	3.2	3	6	SUBDUCCION
1378	2013-10-12 00:39	13.230	-90.470	18.0	3.9	5	7	G1
1379*	2013-10-12 10:02	13.262	-90.886	17.2	3.9	4	4	G1
1380*	2013-10-12 14:09	14.284	-91.472	77.5	3.2	3	6	SUBDUCCION
1381*	2013-10-12 16:04	13.550	-91.106	50.0	3.8	4	7	SUBDUCCION
1382*	2013-10-12 16:33	12.904	-89.429	21.1	4.2	5	8	REGIONAL
1383*	2013-10-12 18:05	13.287	-89.717	0.0	3.7	3	6	REGIONAL
1384	2013-10-13 02:47	13.433	-90.431	31.5	4.0	7	7	SUBDUCCION

Continua en la siguiente página...

Cuadro 4: ...continuación

No.	Tiempo de origen	Lat	Lon	Prof	M	NST	NF	ZS
1385	2013-10-13 08:35	14.020	-91.614	30.4	3.1	3	6	SUBDUCCION
1386*	2013-10-13 09:55	13.353	-90.044	8.4	3.4	3	6	G2
1387	2013-10-13 14:06	13.206	-90.183	11.7	3.9	5	7	G1
1388*	2013-10-14 03:13	14.072	-91.186	67.0	3.5	5	7	SUBDUCCION
1389*	2013-10-14 07:07	11.356	-86.726	0.3	4.8	6	9	DISTANTE
1390*	2013-10-14 08:01	13.968	-91.659	63.6	3.7	6	7	SUBDUCCION
1391*	2013-10-14 12:47	15.322	-90.563	13.1	3.0	4	8	G6
1392*	2013-10-14 21:50	15.212	-91.416	69.7	3.3	3	6	SUBDUCCION
1393	2013-10-14 22:10	14.967	-91.534	157.0	3.5	6	12	SUBDUCCION
1394*	2013-10-15 01:28	14.533	-93.004	165.5	4.4	6	11	REGIONAL
1395*	2013-10-15 01:33	13.852	-91.397	50.0	3.1	3	6	SUBDUCCION
1396*	2013-10-15 02:21	13.574	-90.917	80.6	3.3	5	10	SUBDUCCION
1397	2013-10-15 09:48	12.997	-89.671	3.4	4.3	5	7	REGIONAL
1398*	2013-10-15 10:50	13.907	-91.574	40.5	3.5	3	6	SUBDUCCION
1399*	2013-10-15 11:38	15.083	-93.055	42.5	4.2	5	7	REGIONAL
1400*	2013-10-15 14:29	14.519	-90.037	50.0	3.5	4	7	SUBDUCCION
1401*	2013-10-15 19:50	12.956	-90.528	0.0	3.9	5	8	G1
1402*	2013-10-15 19:58	12.989	-90.501	1.2	4.6	7	7	G1
1403*	2013-10-15 21:29	12.560	-88.423	0.0	4.8	7	8	REGIONAL
1404*	2013-10-16 01:13	13.615	-91.598	62.7	3.6	5	7	SUBDUCCION
1405*	2013-10-16 01:17	13.756	-91.482	13.9	3.6	5	6	G1
1406*	2013-10-16 02:09	15.543	-93.645	22.5	4.4	3	5	REGIONAL
1407*	2013-10-16 07:25	14.534	-92.257	53.8	3.6	3	6	SUBDUCCION
1408	2013-10-16 19:49	13.897	-91.526	19.1	3.8	5	9	G1
1409*	2013-10-17 02:09	12.130	-89.135	0.0	4.2	5	9	REGIONAL
1410*	2013-10-17 10:27	13.784	-91.336	50.0	3.7	6	9	SUBDUCCION
1411*	2013-10-17 18:40	16.179	-92.667	138.8	4.1	6	10	REGIONAL
1412*	2013-10-17 19:04	13.907	-91.092	50.0	3.1	4	8	SUBDUCCION
1413*	2013-10-17 19:53	13.758	-91.161	36.0	3.4	4	6	SUBDUCCION
1414	2013-10-18 08:12	13.368	-89.985	20.6	3.7	5	8	G2
1415*	2013-10-18 10:30	14.113	-89.907	2.3	3.4	5	8	G4
1416*	2013-10-18 23:35	14.154	-91.482	34.9	3.6	4	7	SUBDUCCION
1417*	2013-10-19 05:59	14.303	-90.335	5.5	2.5	3	5	G4
1418*	2013-10-19 08:35	14.516	-92.121	55.2	3.7	3	5	SUBDUCCION
1419	2013-10-19 19:24	14.387	-90.287	3.2	3.1	4	6	G4
1420	2013-10-20 01:21	13.275	-90.361	6.0	3.5	4	6	G1
1421*	2013-10-20 07:12	14.469	-91.680	80.0	3.3	3	5	SUBDUCCION
1422	2013-10-20 18:25	13.964	-91.452	28.3	3.8	4	6	SUBDUCCION
1423	2013-10-20 19:09	13.818	-91.406	21.5	3.4	4	5	G1
1424	2013-10-20 21:21	14.415	-92.301	66.8	4.3	5	6	SUBDUCCION
1425*	2013-10-20 23:23	14.113	-91.369	50.0	3.4	3	6	SUBDUCCION
1426*	2013-10-21 18:32	13.771	-92.329	50.0	4.2	4	6	SUBDUCCION
1427	2013-10-21 22:32	14.000	-91.574	33.9	3.3	4	7	SUBDUCCION
1428*	2013-10-22 02:40	13.849	-91.244	50.0	3.1	3	6	SUBDUCCION
1429*	2013-10-22 07:48	15.649	-92.381	50.0	4.7	5	7	REGIONAL
1430*	2013-10-22 13:09	14.460	-91.721	81.5	3.4	3	6	SUBDUCCION

Continua en la siguiente página...

Cuadro 4: ...continuación

No.	Tiempo de origen	Lat	Lon	Prof	M	NST	NF	ZS
1431*	2013-10-22 14:25	15.801	-91.122	17.9	3.6	5	8	G6
1432*	2013-10-22 16:28	14.502	-91.816	70.6	3.3	3	6	SUBDUCCION
1433*	2013-10-22 17:52	13.849	-92.038	35.5	3.5	4	8	SUBDUCCION
1434*	2013-10-23 17:51	14.182	-92.630	76.5	4.1	3	5	SUBDUCCION
1435*	2013-10-23 23:00	16.614	-95.148	62.2	5.1	5	5	DISTANTE
1436*	2013-10-23 23:22	15.771	-93.372	31.4	4.0	3	6	REGIONAL
1437*	2013-10-24 01:48	13.084	-89.475	0.0	4.3	4	5	REGIONAL
1438*	2013-10-24 10:08	14.114	-90.588	215.3	4.0	3	6	SUBDUCCION
1439	2013-10-24 14:45	13.798	-91.358	30.1	3.4	5	5	SUBDUCCION
1440*	2013-10-24 15:26	16.061	-92.218	14.7	3.5	3	4	REGIONAL
1441*	2013-10-24 20:51	15.344	-90.522	13.0	4.1	5	6	G6
1442	2013-10-25 04:19	15.091	-90.460	35.7	3.4	5	8	G6
1443*	2013-10-25 06:40	13.514	-90.944	50.0	3.4	3	6	SUBDUCCION
1444	2013-10-25 13:24	14.542	-90.572	5.9	2.8	4	6	G5
1445	2013-10-25 13:28	14.604	-90.568	6.1	2.9	3	5	G5
1446	2013-10-25 13:42	14.590	-90.585	23.8	2.4	3	5	G5
1447	2013-10-25 14:18	15.574	-91.465	16.2	3.6	3	5	G6
1448	2013-10-25 17:42	14.590	-90.568	7.0	2.7	3	6	G5
1449	2013-10-26 00:16	14.242	-91.984	30.9	3.8	3	4	SUBDUCCION
1450	2013-10-26 02:41	13.716	-90.869	51.2	3.4	4	6	SUBDUCCION
1451*	2013-10-26 02:49	13.888	-91.378	44.5	3.7	4	6	SUBDUCCION
1452*	2013-10-26 06:25	14.813	-91.665	67.8	3.4	3	5	SUBDUCCION
1453	2013-10-27 03:54	14.273	-90.320	1.1	3.4	4	6	G4
1454*	2013-10-27 03:57	15.630	-90.061	124.7	3.5	3	4	SUBDUCCION
1455	2013-10-27 04:43	14.727	-89.757	1.1	3.7	5	6	G5
1456	2013-10-27 04:48	14.774	-89.786	13.3	3.0	4	8	G5
1457*	2013-10-27 04:52	14.016	-91.799	13.2	3.8	4	6	G1
1458*	2013-10-27 05:43	13.619	-91.119	16.5	3.4	4	6	G1
1459*	2013-10-27 07:45	14.476	-91.957	50.0	4.5	3	3	SUBDUCCION
1460*	2013-10-27 17:30	12.459	-92.442	33.0	4.2	5	5	REGIONAL
1461*	2013-10-27 21:43	12.383	-92.483	19.6	3.8	4	4	REGIONAL
1462*	2013-10-27 21:57	15.196	-91.952	81.1	3.6	3	5	SUBDUCCION
1463	2013-10-28 03:42	13.097	-90.212	18.8	3.6	3	4	G1
1464*	2013-10-28 03:57	15.088	-91.884	70.0	3.4	3	6	SUBDUCCION
1465*	2013-10-28 09:19	13.786	-89.462	13.6	4.0	3	4	REGIONAL
1466*	2013-10-28 23:58	13.569	-91.709	50.0	3.4	3	4	SUBDUCCION
1467	2013-10-29 03:38	14.168	-91.638	29.5	3.9	4	4	SUBDUCCION
1468*	2013-10-29 06:26	13.341	-90.476	28.8	3.9	5	5	SUBDUCCION
1469*	2013-10-29 06:45	13.777	-89.691	49.9	4.6	5	5	SUBDUCCION
1470	2013-10-29 14:07	13.762	-90.771	29.8	3.2	4	9	SUBDUCCION
1471*	2013-10-29 21:56	14.369	-92.063	26.9	3.8	3	6	SUBDUCCION
1472*	2013-10-29 22:05	16.145	-90.454	25.8	3.5	4	7	G8
1473*	2013-10-30 00:08	15.238	-92.676	32.6	4.3	3	5	REGIONAL
1474*	2013-10-30 01:02	14.565	-91.787	74.6	3.3	3	4	SUBDUCCION
1475*	2013-10-30 10:00	14.169	-90.422	152.7	3.7	3	6	SUBDUCCION
1476	2013-10-30 14:46	13.959	-91.861	26.6	3.5	3	6	SUBDUCCION

Continua en la siguiente página...

Cuadro 4: ...continuación

No.	Tiempo de origen	Lat	Lon	Prof	M	NST	NF	ZS
1477	2013-10-30 19:05	13.302	-91.110	96.2	3.8	4	7	SUBDUCCION
1478*	2013-10-31 00:58	15.000	-92.112	80.1	3.4	3	6	SUBDUCCION
1479*	2013-10-31 01:17	14.738	-92.244	50.9	3.6	3	6	SUBDUCCION
1480*	2013-10-31 08:53	13.634	-91.492	44.8	4.5	5	7	SUBDUCCION
1481*	2013-10-31 20:27	14.921	-91.555	82.9	3.4	3	6	SUBDUCCION
1482	2013-11-01 05:59	14.022	-91.322	49.3	3.3	3	6	SUBDUCCION
1483*	2013-11-01 07:39	12.358	-89.184	50.0	4.2	5	9	REGIONAL
1484	2013-11-01 10:58	13.920	-91.295	25.8	3.3	5	10	SUBDUCCION
1485*	2013-11-01 16:57	14.602	-90.809	5.3	3.6	5	5	G4
1486*	2013-11-02 09:45	13.330	-91.002	50.0	4.0	5	5	SUBDUCCION
1487*	2013-11-03 23:28	14.050	-91.580	40.7	3.2	3	6	SUBDUCCION
1488*	2013-11-04 02:10	12.271	-87.435	28.1	4.5	3	4	REGIONAL
1489*	2013-11-04 02:18	14.989	-92.323	135.1	3.5	3	4	SUBDUCCION
1490*	2013-11-04 05:40	15.172	-91.002	69.9	3.4	3	4	SUBDUCCION
1491*	2013-11-04 06:09	15.455	-92.560	80.8	3.7	4	6	REGIONAL
1492*	2013-11-04 18:45	15.366	-91.730	41.5	3.4	3	5	SUBDUCCION
1493	2013-11-04 20:09	13.323	-90.096	22.0	3.7	4	6	G2
1494*	2013-11-04 21:27	14.056	-89.835	121.9	3.8	3	4	SUBDUCCION
1495*	2013-11-04 21:35	11.697	-86.513	50.0	4.7	3	3	DISTANTE
1496*	2013-11-04 23:12	13.095	-92.694	50.0	4.0	3	3	REGIONAL
1497*	2013-11-05 03:43	13.717	-88.683	48.2	3.9	3	4	REGIONAL
1498*	2013-11-05 04:37	13.111	-89.544	50.0	3.8	3	4	REGIONAL
1499	2013-11-05 21:41	14.653	-90.497	21.6	2.9	3	5	G5
1500	2013-11-06 00:01	15.049	-91.447	66.1	3.8	4	4	SUBDUCCION
1501*	2013-11-06 00:10	14.523	-91.776	77.1	3.2	3	6	SUBDUCCION
1502*	2013-11-06 01:02	13.054	-91.962	35.0	3.9	3	5	SUBDUCCION
1503*	2013-11-07 00:52	13.679	-92.359	50.0	4.3	5	6	SUBDUCCION
1504	2013-11-07 15:18	13.719	-91.188	35.1	3.0	3	6	SUBDUCCION
1505*	2013-11-07 15:32	13.318	-90.584	19.0	3.4	4	7	G1
1506*	2013-11-07 18:33	14.348	-91.976	77.4	3.4	3	6	SUBDUCCION
1507*	2013-11-07 19:46	14.452	-91.578	76.7	3.4	3	6	SUBDUCCION
1508*	2013-11-07 22:54	14.091	-90.815	198.8	3.3	4	8	SUBDUCCION
1509*	2013-11-07 22:55	14.083	-91.664	73.7	3.2	4	8	SUBDUCCION
1510	2013-11-08 09:30	14.393	-91.901	72.6	3.9	4	6	SUBDUCCION
1511*	2013-11-09 07:29	13.875	-91.111	58.7	3.8	4	5	SUBDUCCION
1512	2013-11-10 01:41	14.446	-91.511	77.7	3.3	4	7	SUBDUCCION
1513*	2013-11-10 23:51	15.070	-89.545	8.8	3.4	4	5	G6
1514*	2013-11-11 06:29	13.663	-91.361	50.0	3.7	4	6	SUBDUCCION
1515	2013-11-11 12:16	13.450	-90.437	34.7	3.4	4	7	SUBDUCCION
1516*	2013-11-12 03:34	14.730	-91.594	92.7	3.0	3	6	SUBDUCCION
1517	2013-11-12 03:47	15.791	-90.629	16.3	3.5	3	5	G6
1518*	2013-11-12 05:33	14.422	-92.727	0.0	3.8	3	6	G1
1519*	2013-11-12 07:15	14.947	-92.017	86.8	3.8	4	7	SUBDUCCION
1520*	2013-11-12 22:23	15.407	-93.187	16.5	3.9	3	5	REGIONAL
1521*	2013-11-13 04:12	16.080	-85.680	35.0	4.7	5	5	DISTANTE
1522*	2013-11-13 10:48	13.976	-91.971	26.6	3.6	3	4	SUBDUCCION

Continua en la siguiente página...

Cuadro 4: ...continuación

No.	Tiempo de origen	Lat	Lon	Prof	M	NST	NF	ZS
1523*	2013-11-13 12:53	13.430	-91.123	41.5	3.7	3	5	SUBDUCCION
1524*	2013-11-13 13:47	13.846	-91.151	49.3	3.3	3	6	SUBDUCCION
1525*	2013-11-13 15:56	14.161	-91.462	79.0	3.6	3	6	SUBDUCCION
1526*	2013-11-14 01:55	15.639	-91.716	79.7	3.6	3	6	SUBDUCCION
1527	2013-11-14 03:37	13.411	-90.544	14.4	3.8	4	4	G1
1528	2013-11-14 06:17	14.383	-91.844	50.0	3.4	3	4	SUBDUCCION
1529*	2013-11-14 22:09	13.663	-91.022	42.0	4.2	7	7	SUBDUCCION
1530*	2013-11-15 01:56	14.414	-91.329	65.9	3.0	3	6	SUBDUCCION
1531*	2013-11-15 07:25	14.488	-91.818	112.5	4.0	4	6	SUBDUCCION
1532*	2013-11-15 14:52	14.930	-93.103	34.2	4.2	3	4	REGIONAL
1533	2013-11-15 16:37	14.313	-90.105	29.9	3.5	3	4	SUBDUCCION
1534	2013-11-15 20:45	15.230	-89.983	9.4	3.3	5	7	G6
1535	2013-11-16 04:06	13.517	-91.195	50.0	3.8	4	6	SUBDUCCION
1536*	2013-11-16 04:58	14.058	-92.446	120.3	3.8	3	5	SUBDUCCION
1537*	2013-11-16 06:42	13.830	-91.471	13.7	3.4	4	6	G1
1538*	2013-11-16 13:24	13.521	-88.982	34.8	4.2	4	6	REGIONAL
1539	2013-11-16 22:36	14.425	-90.215	50.0	2.9	4	4	SUBDUCCION
1540	2013-11-17 00:40	15.280	-92.063	32.2	3.7	3	5	SUBDUCCION
1541*	2013-11-17 02:04	15.025	-92.344	151.5	4.1	4	4	SUBDUCCION
1542*	2013-11-17 03:15	9.218	-86.713	0.0	5.1	5	6	DISTANTE
1543*	2013-11-17 03:57	14.176	-91.677	30.7	3.3	3	5	SUBDUCCION
1544*	2013-11-17 04:43	13.982	-91.844	25.9	3.5	3	4	SUBDUCCION
1545	2013-11-17 12:45	13.834	-92.051	19.4	3.7	3	6	G1
1546*	2013-11-17 15:02	14.001	-92.207	44.2	4.3	4	4	SUBDUCCION
1547*	2013-11-17 15:27	13.330	-90.048	35.1	3.4	3	5	SUBDUCCION
1548	2013-11-17 15:47	13.854	-91.535	19.0	3.6	4	4	G1
1549*	2013-11-17 19:20	15.163	-89.760	50.0	3.8	3	5	G6
1550	2013-11-17 20:42	13.923	-89.765	5.4	3.4	4	6	G4
1551*	2013-11-18 02:08	14.176	-92.433	35.9	3.9	3	4	SUBDUCCION
1552*	2013-11-18 02:34	15.725	-91.019	24.4	3.9	3	4	G6
1553*	2013-11-18 02:41	13.971	-92.100	50.0	3.4	3	6	SUBDUCCION
1554*	2013-11-18 02:43	13.093	-92.817	39.5	4.2	4	4	REGIONAL
1555	2013-11-18 04:07	13.675	-90.786	47.3	4.0	4	6	SUBDUCCION
1556*	2013-11-18 04:41	13.968	-92.453	35.4	3.6	3	4	SUBDUCCION
1557*	2013-11-18 06:39	13.634	-91.902	19.3	3.8	3	4	G1
1558*	2013-11-18 08:39	13.709	-92.057	74.8	3.6	3	4	SUBDUCCION
1559*	2013-11-19 04:52	14.830	-92.574	75.4	4.0	4	5	REGIONAL
1560	2013-11-19 20:07	13.955	-91.403	50.0	3.3	3	3	SUBDUCCION
1561	2013-11-20 01:49	13.608	-91.055	27.8	3.5	4	5	SUBDUCCION
1562*	2013-11-20 12:29	12.989	-88.667	0.0	4.4	4	5	REGIONAL
1563*	2013-11-20 15:53	13.486	-90.988	25.1	4.1	7	9	SUBDUCCION
1564*	2013-11-20 20:13	13.990	-91.618	48.7	3.0	3	6	SUBDUCCION
1565*	2013-11-20 21:42	13.873	-91.725	34.6	3.5	3	4	SUBDUCCION
1566*	2013-11-20 22:28	13.002	-89.142	13.5	4.4	7	7	REGIONAL
1567	2013-11-21 02:33	13.057	-91.153	3.4	3.9	4	5	G1
1568*	2013-11-21 05:40	14.246	-91.498	47.6	3.1	3	5	SUBDUCCION

Continua en la siguiente página...

Cuadro 4: ...continuación

No.	Tiempo de origen	Lat	Lon	Prof	M	NST	NF	ZS
1569*	2013-11-22 00:16	13.253	-90.614	24.6	3.5	3	5	G1
1570*	2013-11-22 03:25	13.463	-90.945	27.7	3.8	3	6	SUBDUCCION
1571	2013-11-22 04:13	14.197	-91.776	29.0	3.4	3	6	SUBDUCCION
1572*	2013-11-23 00:31	14.208	-92.181	68.3	4.2	6	7	SUBDUCCION
1573*	2013-11-23 00:49	13.525	-93.491	34.7	4.8	7	8	REGIONAL
1574	2013-11-23 22:56	13.535	-91.486	50.0	3.9	4	5	SUBDUCCION
1575*	2013-11-24 01:12	12.977	-89.679	0.0	4.2	4	7	REGIONAL
1576*	2013-11-24 12:16	13.432	-91.082	0.0	4.0	6	7	G1
1577*	2013-11-25 03:54	12.813	-92.214	31.1	5.0	6	6	REGIONAL
1578	2013-11-25 11:08	14.239	-92.153	21.9	3.7	3	5	G1
1579*	2013-11-25 12:19	15.315	-92.168	142.6	3.9	3	5	SUBDUCCION
1580*	2013-11-25 14:20	15.504	-92.276	111.7	3.7	3	5	REGIONAL
1581*	2013-11-25 16:46	14.107	-93.052	35.0	3.9	3	4	REGIONAL
1582*	2013-11-25 18:42	13.396	-91.803	119.5	4.3	4	6	SUBDUCCION
1583*	2013-11-25 21:59	15.682	-94.011	23.4	4.2	3	5	DISTANTE
1584	2013-11-26 02:47	13.178	-91.183	15.8	4.2	4	5	G1
1585	2013-11-26 06:42	13.184	-90.971	21.1	3.7	3	6	G1
1586	2013-11-26 11:07	14.452	-91.740	55.5	3.6	4	6	SUBDUCCION
1587	2013-11-26 19:16	14.568	-92.229	59.6	4.1	6	8	SUBDUCCION
1588*	2013-11-28 05:47	14.598	-92.080	129.3	3.7	6	10	SUBDUCCION
1589*	2013-11-28 08:09	13.824	-90.710	111.6	3.5	5	8	SUBDUCCION
1590*	2013-11-28 10:21	14.907	-91.979	89.5	3.3	3	5	SUBDUCCION
1591*	2013-11-28 13:33	14.558	-91.943	69.9	3.6	4	6	SUBDUCCION
1592*	2013-11-28 18:17	10.704	-95.657	50.0	4.1	3	3	DISTANTE
1593*	2013-11-28 21:10	13.898	-91.611	35.1	3.2	3	5	SUBDUCCION
1594*	2013-11-28 21:55	12.435	-91.778	50.0	3.7	3	3	REGIONAL
1595*	2013-11-28 22:52	12.988	-89.927	102.9	3.8	5	5	REGIONAL
1596*	2013-11-29 10:01	13.131	-89.252	3.5	4.8	7	7	REGIONAL
1597	2013-11-29 11:36	13.559	-89.607	23.9	4.2	7	9	REGIONAL
1598	2013-12-01 16:40	14.048	-91.853	26.3	3.3	3	6	SUBDUCCION
1599	2013-12-01 16:40	14.048	-91.853	26.3	3.3	3	6	SUBDUCCION
1600*	2013-12-01 20:08	13.607	-90.652	104.7	3.5	5	8	SUBDUCCION
1601*	2013-12-01 20:25	14.417	-91.145	118.8	3.2	3	4	SUBDUCCION
1602	2013-12-02 00:47	13.922	-91.401	56.4	3.4	6	10	SUBDUCCION
1603*	2013-12-02 11:06	13.335	-88.756	4.1	4.0	3	4	REGIONAL
1604*	2013-12-02 12:33	13.263	-89.697	29.3	3.7	3	4	REGIONAL
1605*	2013-12-02 15:16	15.213	-92.362	27.8	3.7	4	6	REGIONAL
1606*	2013-12-02 15:36	14.750	-91.164	74.7	2.7	3	5	SUBDUCCION
1607*	2013-12-02 21:13	14.951	-91.172	104.5	3.2	3	5	SUBDUCCION
1608*	2013-12-02 21:41	14.933	-90.406	173.9	3.5	3	6	SUBDUCCION
1609*	2013-12-02 21:53	14.194	-91.110	110.0	3.0	3	6	SUBDUCCION
1610*	2013-12-02 22:49	14.103	-91.434	41.8	3.4	3	6	SUBDUCCION
1611	2013-12-03 11:49	13.357	-90.616	21.7	3.5	5	8	G1
1612*	2013-12-03 15:32	14.339	-92.820	35.2	3.8	3	4	SUBDUCCION
1613*	2013-12-04 12:23	13.542	-90.794	29.0	3.6	4	7	SUBDUCCION
1614*	2013-12-04 18:05	12.939	-92.388	50.0	4.2	5	9	REGIONAL

Continua en la siguiente página...

Cuadro 4: ...continuación

No.	Tiempo de origen	Lat	Lon	Prof	M	NST	NF	ZS
1615*	2013-12-04 21:15	13.443	-92.084	34.8	4.2	5	6	SUBDUCCION
1616*	2013-12-04 23:28	14.038	-91.551	55.3	3.6	4	6	SUBDUCCION
1617*	2013-12-05 07:22	14.815	-93.137	170.5	4.3	3	6	REGIONAL
1618*	2013-12-05 09:52	15.361	-91.961	32.5	3.6	3	6	SUBDUCCION
1619*	2013-12-05 13:00	13.322	-92.064	47.1	3.7	5	8	SUBDUCCION
1620	2013-12-05 17:08	13.940	-91.254	50.4	2.9	3	6	SUBDUCCION
1621*	2013-12-05 19:17	12.736	-91.648	34.9	4.0	7	14	REGIONAL
1622*	2013-12-05 22:36	13.926	-92.041	22.1	3.7	3	6	G1
1623*	2013-12-05 22:46	16.045	-92.413	11.3	4.0	3	6	REGIONAL
1624*	2013-12-05 23:25	14.935	-90.159	0.0	3.0	3	6	G6
1625*	2013-12-05 23:31	14.859	-90.296	71.6	3.0	4	8	G6
1626	2013-12-06 18:16	13.515	-90.915	25.7	3.7	4	5	SUBDUCCION
1627	2013-12-06 19:30	14.422	-92.017	50.0	3.7	3	6	SUBDUCCION
1628*	2013-12-06 21:08	14.397	-92.103	50.0	3.6	3	6	SUBDUCCION
1629*	2013-12-06 22:54	13.902	-91.935	92.7	3.7	4	5	SUBDUCCION
1630*	2013-12-07 11:38	13.458	-92.071	8.7	3.7	4	5	G1
1631*	2013-12-08 01:11	14.086	-91.108	68.9	3.6	6	6	SUBDUCCION
1632*	2013-12-08 10:11	14.227	-91.780	40.7	3.4	3	6	SUBDUCCION
1633*	2013-12-08 11:11	14.396	-91.907	79.6	3.7	4	4	SUBDUCCION
1634*	2013-12-08 11:16	14.518	-91.006	9.6	2.8	3	5	G4
1635	2013-12-08 17:23	13.890	-91.148	50.0	3.1	3	6	SUBDUCCION
1636*	2013-12-09 01:12	15.117	-92.342	33.7	3.9	3	6	REGIONAL
1637	2013-12-09 19:43	14.263	-90.694	8.9	3.0	5	8	G4
1638*	2013-12-09 23:19	15.032	-89.526	0.0	3.6	3	6	G6
1639*	2013-12-10 03:44	12.933	-92.439	73.4	4.1	7	13	REGIONAL
1640	2013-12-10 04:16	13.661	-92.027	13.8	3.5	4	8	G1
1641*	2013-12-10 04:24	15.360	-91.083	102.3	3.7	3	6	SUBDUCCION
1642*	2013-12-10 11:28	11.362	-85.991	2.6	4.7	5	6	DISTANTE
1643*	2013-12-10 12:00	13.955	-90.091	165.0	3.8	5	5	SUBDUCCION
1644*	2013-12-10 14:19	12.679	-89.262	0.0	4.4	4	6	REGIONAL
1645*	2013-12-11 12:22	15.671	-89.112	0.0	3.4	3	5	G6
1646	2013-12-11 13:10	14.230	-92.123	23.4	3.4	3	6	G1
1647	2013-12-11 17:15	13.718	-90.703	32.6	3.1	3	5	SUBDUCCION
1648	2013-12-11 19:15	14.692	-92.165	62.4	4.1	4	5	SUBDUCCION
1649*	2013-12-11 19:52	15.399	-91.938	139.1	3.7	3	6	SUBDUCCION
1650	2013-12-11 22:56	14.724	-91.967	60.3	3.6	4	5	SUBDUCCION
1651*	2013-12-12 03:21	13.771	-91.095	52.9	3.4	4	6	SUBDUCCION
1652*	2013-12-12 14:35	13.627	-92.380	58.0	4.3	6	8	SUBDUCCION
1653	2013-12-12 17:36	13.751	-90.297	89.2	3.7	5	6	SUBDUCCION
1654	2013-12-12 22:40	13.501	-89.640	22.4	4.0	5	8	REGIONAL
1655*	2013-12-12 22:45	13.840	-89.821	55.5	5.0	6	7	SUBDUCCION
1656*	2013-12-13 07:10	13.992	-92.079	68.8	4.0	5	6	SUBDUCCION
1657*	2013-12-13 16:32	13.914	-91.352	50.0	3.1	3	5	SUBDUCCION
1658*	2013-12-13 17:05	15.366	-92.190	28.7	3.2	3	4	REGIONAL
1659*	2013-12-14 03:38	13.801	-92.074	89.4	4.0	4	7	SUBDUCCION
1660*	2013-12-14 08:57	14.325	-91.893	66.7	4.0	5	5	SUBDUCCION

Continua en la siguiente página...

Cuadro 4: ...continuación

No.	Tiempo de origen	Lat	Lon	Prof	M	NST	NF	ZS
1661*	2013-12-14 09:00	14.449	-91.993	86.7	3.4	4	4	SUBDUCCION
1662*	2013-12-14 18:04	14.154	-92.046	22.7	3.2	3	4	G1
1663*	2013-12-14 19:22	13.795	-90.705	50.0	3.6	4	5	SUBDUCCION
1664	2013-12-14 23:20	13.810	-91.790	24.9	3.5	3	6	G1
1665	2013-12-15 02:09	15.219	-93.057	31.1	4.0	3	6	REGIONAL
1666*	2013-12-15 11:38	13.276	-89.610	0.0	3.9	4	6	REGIONAL
1667*	2013-12-15 14:33	14.745	-91.952	18.7	3.7	4	5	G3
1668	2013-12-15 18:35	14.264	-91.952	25.5	3.6	3	4	SUBDUCCION
1669*	2013-12-15 21:28	13.348	-91.830	15.8	4.1	5	6	G1
1670*	2013-12-15 22:59	13.531	-88.639	184.0	4.3	5	6	REGIONAL
1671*	2013-12-16 03:59	14.037	-91.372	50.0	3.1	3	6	SUBDUCCION
1672*	2013-12-17 14:45	14.264	-92.118	90.3	3.8	4	8	SUBDUCCION
1673*	2013-12-17 15:46	13.059	-92.946	0.0	4.1	3	6	REGIONAL
1674*	2013-12-17 19:21	14.122	-90.510	107.2	3.3	3	6	SUBDUCCION
1675	2013-12-17 22:57	14.299	-90.342	5.8	3.1	5	9	G4
1676	2013-12-18 13:00	13.764	-89.882	20.7	3.2	3	4	G4
1677*	2013-12-18 16:15	12.633	-90.666	34.0	3.8	3	5	SUBDUCCION
1678*	2013-12-18 22:45	15.438	-91.911	31.8	3.4	3	5	SUBDUCCION
1679*	2013-12-19 06:46	15.304	-91.776	116.9	3.5	3	5	SUBDUCCION
1680*	2013-12-19 09:33	13.829	-92.785	0.0	3.9	4	5	G1
1681*	2013-12-19 10:46	14.901	-91.725	76.8	3.3	3	5	SUBDUCCION
1682*	2013-12-19 14:58	13.822	-91.691	85.5	3.6	3	5	SUBDUCCION
1683*	2013-12-19 15:18	14.618	-91.032	177.1	3.7	3	4	SUBDUCCION
1684*	2013-12-19 15:38	13.301	-91.069	35.1	3.9	5	6	SUBDUCCION
1685*	2013-12-19 19:44	14.156	-91.690	30.3	3.4	3	4	SUBDUCCION
1686	2013-12-19 22:00	15.329	-91.638	18.6	3.6	3	5	G6
1687*	2013-12-19 23:00	14.427	-92.366	24.2	3.6	3	6	G2
1688*	2013-12-21 03:06	15.787	-91.130	3.6	3.4	5	10	G6
1689*	2013-12-21 04:38	13.470	-91.525	53.2	4.1	6	7	SUBDUCCION
1690*	2013-12-21 20:02	13.891	-91.663	31.8	3.5	4	4	SUBDUCCION
1691*	2013-12-22 17:30	13.360	-90.320	32.8	4.3	7	7	SUBDUCCION
1692*	2013-12-25 13:07	13.527	-91.657	34.4	3.6	4	5	SUBDUCCION
1693*	2013-12-25 13:39	14.396	-90.762	2.8	3.0	3	5	G4
1694*	2013-12-25 20:09	14.509	-92.631	57.8	4.4	7	9	SUBDUCCION
1695*	2013-12-26 10:01	12.836	-88.887	35.2	4.2	4	6	REGIONAL
1696*	2013-12-26 20:30	14.122	-92.088	108.7	4.0	4	8	SUBDUCCION
1697	2013-12-27 22:26	13.238	-91.130	8.7	4.3	6	8	G1
1698	2013-12-28 01:04	14.502	-91.775	59.6	3.5	4	5	SUBDUCCION
1699*	2013-12-28 11:03	13.558	-91.142	44.2	3.5	3	5	SUBDUCCION
1700	2013-12-28 12:50	13.314	-89.961	17.2	3.5	3	4	G2
1701*	2013-12-28 14:43	13.161	-90.386	32.7	3.6	3	4	SUBDUCCION
1702*	2013-12-29 03:58	14.934	-91.808	81.3	2.9	3	6	SUBDUCCION
1703*	2013-12-29 04:43	14.544	-90.518	6.7	3.0	3	5	G5
1704	2013-12-29 07:12	14.286	-90.325	10.1	3.3	4	4	G4
1705*	2013-12-29 08:34	14.158	-91.502	97.3	3.4	3	4	SUBDUCCION
1706*	2013-12-29 15:10	13.775	-92.136	4.7	3.7	4	5	G1

Continua en la siguiente página...

Cuadro 4: ...continuación

No.	Tiempo de origen	Lat	Lon	Prof	M	NST	NF	ZS
1707	2013-12-29 16:26	13.329	-89.877	23.0	3.7	3	6	G2
1708*	2013-12-29 21:10	14.872	-91.041	112.1	3.5	3	6	SUBDUCCION
1709	2013-12-29 21:43	13.497	-89.709	23.8	4.0	4	6	SUBDUCCION
1710*	2013-12-30 09:56	14.530	-90.919	196.0	3.8	3	5	SUBDUCCION
1711	2013-12-31 01:45	13.050	-91.318	21.4	4.3	7	8	G1
1712*	2013-12-31 04:03	13.227	-91.801	0.0	3.8	5	6	G1
1713*	2013-12-31 04:21	13.599	-93.439	222.2	4.6	7	13	REGIONAL
1714	2013-12-31 23:06	14.543	-90.520	6.1	2.9	3	5	G5
1715	2013-12-31 23:06	14.543	-90.520	6.1	2.9	3	5	G5
1716*	2013-12-31 23:20	14.397	-90.819	223.2	3.7	3	6	SUBDUCCION

(fin del cuadro)

Donde:

Tiempo de origen	Hora en que se generó el sismo (UTC -06:00:00)
Lat	Latitud Norte del epicentro.
Lon	Longitud Oeste del epicentro.
Prof	Profundidad del sismo en kilómetros.
M	Magnitud sísmica estimada.
NST	Número de estaciones que registraron el sismo.
NF	Número de fases.
ZS	Zona Sísmica.
Region	Región epicentral.
*	Evento sísmico que tiene mas de 25 km de error en su localización.
	Eventos sísmicos reportados sensibles

Referencias

- [1] Benito, Ma. B. y Torres, Y. (eds.). *Amenaza sísmica en América Central*. Madrid: Entimema, 2009. 371 p. ISBN: 978-84-8319-474-4.
- [2] Dean, B. W. Y C. L. Drake. "Focal Mechanism Solutions and Tectonics of the Middle American Arc". *Journal of Geology*. 1978, vol 86, p. 111-128.
- [3] A. Ellis, C. DeMets, R. McCaffrey, P. Briole, B. Cosenza Muralles, O. Flores, M. Guzmán-Speziale, D. Hernández, V. Kostoglodov, P. LaFemina, N. Lord, C. Lasserre , H. Lyon-Caen, M. Rodriguez Maradiaga, E. Molina, J. Rivera, R. Rogers, A. Staller and B. Tikoff. "GPS constraints on deformation in northern Central America from 1999 to 2017, Part 2: Block rotations and fault slip rates, fault locking and distributed deformation". *Geophys. J. Int.* 2019. 218, p. 729-754.
- [4] Guzman-Speziale, M., W. Pennington y T. Matumoto. "The triple junction of the North America, Coco, and Caribbean Plates: Seismicity and Tectonics". *Tectonics*. 1989, vol. 8, núm 5, p. 981-997.
- [5] Guzman-Speziale, M. y J. J. Meneses-Rocha. "The North America-Caribbean plate boundary west of the Motagua-Polochic fault system: a fault jog in Southeastern Mexico". *Journal of South American Earth Sciences*. 2000, vol. 13, p. 459-468.
- [6] Lyon-Caen, H., E. Barrier, C. Lasserre, A. Franco, I. Arzu, L. Chiquin, M. Chiquin, T. Duquesnoy, O. Flores, O. Galicia, J. Luna, E. Molina, O. Porras, J. Requena, V. Robles, J. Romero y R. Wolf. "Kinematics of the North American-Caribbean-Coco's plates in Central America from new GPS measurements across the Polochic-Motagua fault system". *Geophysical Research Letters*. 2006, vol. 33, L19309, doi:10.1029/2006GL027694.
- [7] Mann, P. Y J. Corrigan. "Model for late Neogene deformation in Panama". *Geology*. 1990, vol. 18, p. 558-562.
- [8] Pacheco, J. y L. Sykes. "Seismic moment catalog of large, shallow earthquakes, 1900-1989". *Bulletin of the Seismological Society of America*. 1992, vol 82, p. 1306-1349.
- [9] Plafker, G. "Tectonic aspects of the Guatemala earthquake of 4 February, 1976". *Science*. 1976, vol. 193, p. 1201-1208.

- [10] White , R. “Tectonic implications of upper-crustal seismicity in Central America”. Bulletin of the Seismological Society of America, Decade Map Volume I. 1991, Chapter 18.
- [11] White, R. y Harlow, D. “Destructive upper crustal earthquake in Central America since 1900”. Bulletin of the Seismological Society of America. 1993, vol. 83, núm. 4, p. 1115-1142.
- [12] White, R., J. P. Ligorría e I. L. Cifuentes. “Seismic history of the Middle America subduction zone along El Salvador, Guatemala and Chiapas, Mexico: 1526-2000”. Geological Society of America. 2004, Special Paper, vol. 375.